

---

## Product Information

**Size:**

50ul

**Reactivity:**

Human

**Source:**

Rabbit

**Isotype:**

IgG

**Applications:**

ELISA, WB, IHC

**Recommended dilutions:**

ELISA:1:2000-1:10000, WB:1:500-1:2000,  
IHC:1:20-1:200

**Protein Background:**

Adapter protein of the Toll-like and IL-1 receptor signaling pathway that is involved in the activation of NF-kappa-B via MAP3K1. Promotes proteolytic activation of MAP3K1. Involved in the BMP signaling pathway. Required for normal embryonic development. Required for efficient assembly of mitochondrial NADH: ubiquinone oxidoreductase.

**Gene ID:**

ECSIT

**Uniprot**

Q9BQ95

**Synonyms:**

Evolutionarily conserved signaling intermediate in Toll pathway, mitochondrial (Protein SITPEC), ECSIT

**Immunogen:**

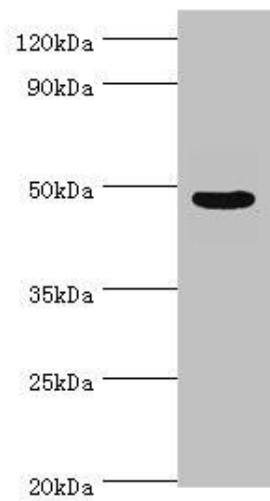
Recombinant Human Evolutionarily conserved signaling intermediate in Toll pathway, mitochondrial protein (185-431AA).

**Storage:**

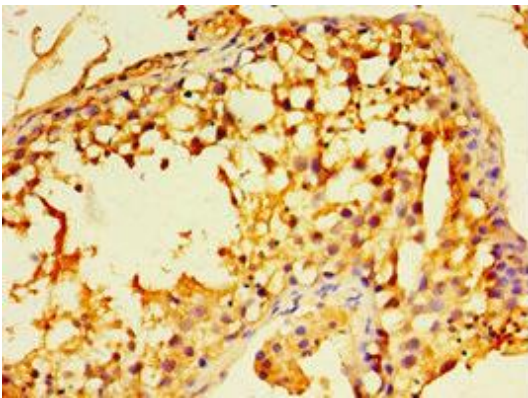
PBS with 0.02% sodium azide, 50% glycerol, pH7.3.

## Product Images

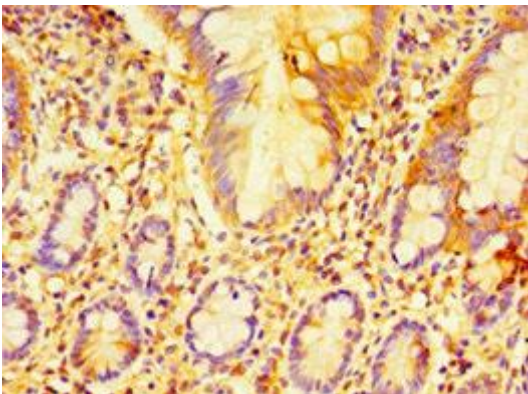
---



Western blot. All lanes: Evolutionarily conserved signaling intermediate in Toll pathway, mitochondrial antibody at 10 $\mu$ g/ml + Jurkat whole cell lysate. Secondary. Goat polyclonal to rabbit IgG at 1/10000 dilution. Predicted band size: 50, 34, 25 kDa. Observed band size: 50 kDa.



Immunohistochemistry of paraffin-embedded human testis tissue using PACO43729 at dilution of 1:100.



Immunohistochemistry of paraffin-embedded human small intestine tissue using PACO43729 at dilution of 1:100.