

ADGRE1 Antibody



PACO43733

Product Information

Size:

50ul

Reactivity:

Human

Source:

Rabbit

Isotype:

IgG

Applications:

ELISA, IHC

Recommended dilutions:

ELISA:1:2000-1:10000, IHC:1:20-1:200

Protein Background:

Could be involved in cell-cell interactions.

Gene ID:

ADGRE1

Uniprot

Q14246

Synonyms:

Adhesion G protein-coupled receptor E1 (EGF-like module receptor 1) (EGF-like module-containing mucin-like hormone receptor-like 1) (EMR1 hormone receptor), ADGRE1, EMR1 TM7LN3

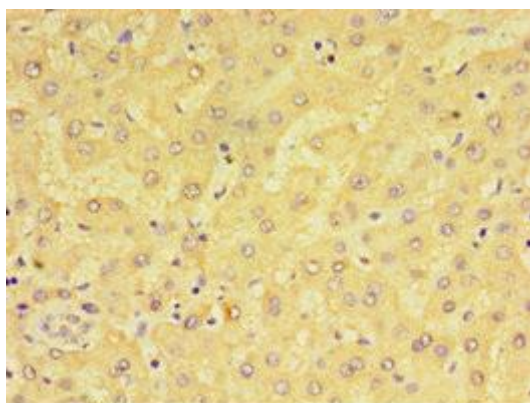
Immunogen:

Recombinant Human Adhesion G protein-coupled receptor E1 protein (21-290AA).

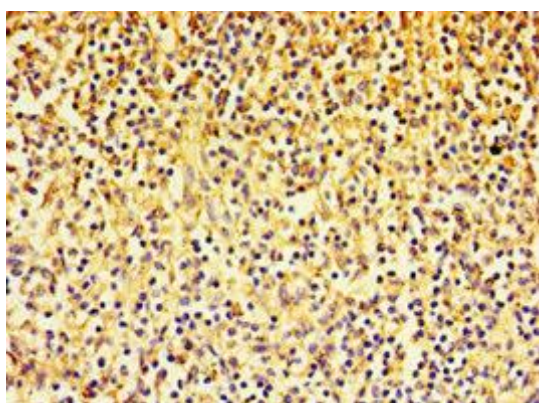
Storage:

PBS with 0.02% sodium azide, 50% glycerol, pH7.3.

Product Images



Immunohistochemistry of paraffin-embedded human liver tissue using PACO43733 at dilution of 1:100.



Immunohistochemistry of paraffin-embedded human spleen tissue using PACO43733 at dilution of 1:100.