

---

## Product Information

**Size:**

50ul

**Reactivity:**

Human, Rat

**Source:**

Rabbit

**Isotype:**

IgG

**Applications:**

ELISA, WB, IHC

**Recommended dilutions:**

ELISA:1:2000-1:10000, WB:1:200-1:1000,  
IHC:1:20-1:200

**Protein Background:**

Microtubule-binding protein which directly binds tubulin and is involved in both polymerization and stabilization of microtubules. Through its action on microtubules, may participate to the refinement of axons by negatively regulating axonal and leading processes branching. Plays a crucial role in neuron polarization and migration in the cerebral cortex and the hippocampus.

**Gene ID:**

FGF13

**Uniprot**

Q92913

**Synonyms:**

Fibroblast growth factor 13 (FGF-13) (Fibroblast growth factor homologous factor 2) (FHF-2), FGF13, FHF2

**Immunogen:**

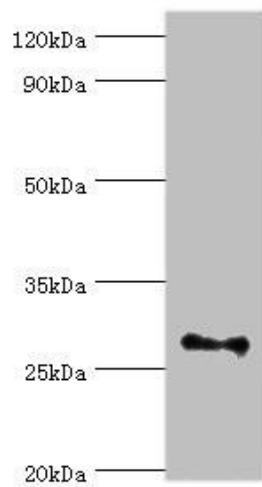
Recombinant Human Fibroblast growth factor 13 protein (1-245AA).

**Storage:**

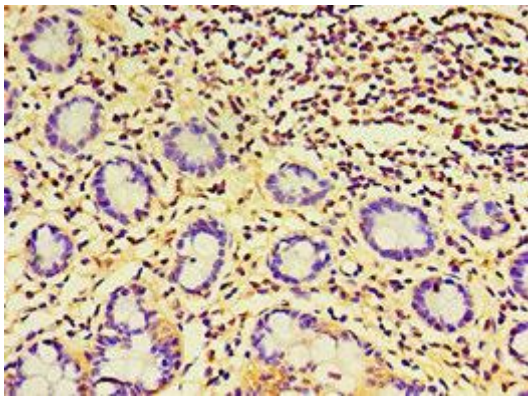
PBS with 0.02% sodium azide, 50% glycerol, pH7.3.

## Product Images

---



Western blot. All lanes: Fibroblast growth factor 13 antibody at 3 $\mu$ g/ml + Rat brain tissue. Secondary. Goat polyclonal to rabbit IgG at 1/10000 dilution. Predicted band size: 28, 22, 29, 23, 26 kDa. Observed band size: 28 kDa.



Immunohistochemistry of paraffin-embedded human small intestine tissue using PACO43738 at dilution of 1:100.