

PACO43746

Product Information

Size:

50ul

Reactivity:

Human

Source:

Rabbit

Isotype:

IgG

Applications:

ELISA, IHC

Recommended dilutions:

ELISA:1:2000-1:10000, IHC:1:20-1:200

Protein Background:

The IL20RA/IL20RB dimer is a receptor for IL19, IL20 and IL24. The IL22RA1/IL20RB dimer is a receptor for IL20 and IL24.

Gene ID:

IL20RB

Uniprot

Q6UXL0

Synonyms:

Interleukin-20 receptor subunit beta (IL-20 receptor subunit beta) (IL-20R-beta) (IL-20RB) (Fibronectin type III domain containing 6) (FNDC6) (IL-20R2), IL20RB, DIRS1

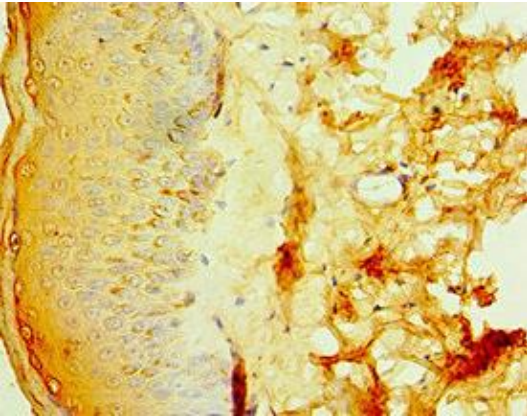
Immunogen:

Recombinant Human Interleukin-20 receptor subunit β protein (48-177AA).

Storage:

PBS with 0.02% sodium azide, 50% glycerol, pH7.3.

Product Images



Immunohistochemistry of paraffin-embedded human skin tissue using PACO43746 at dilution of 1:100.