

PACO43757

---

## Product Information

**Size:**

50ul

**Reactivity:**

Human

**Source:**

Rabbit

**Isotype:**

IgG

**Applications:**

ELISA, IHC

**Recommended dilutions:**

ELISA:1:2000-1:10000, IHC:1:20-1:200

**Protein Background:**

May be involved in the regulation of cell proliferation. Has a cell-proliferation inhibition activity in vitro.

**Gene ID:**

PSCA

**Uniprot**

O43653

**Synonyms:**

Prostate stem cell antigen, PSCA

**Immunogen:**

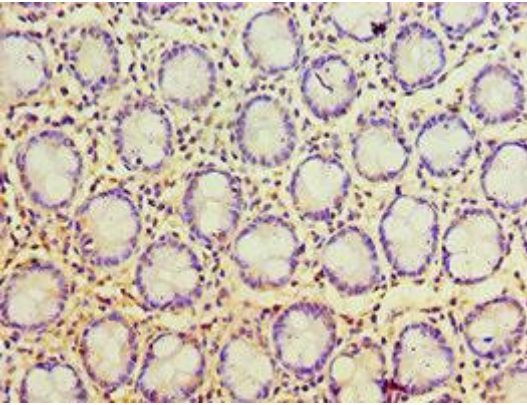
Recombinant Human Prostate stem cell antigen protein (12-114AA).

**Storage:**

PBS with 0.02% sodium azide, 50% glycerol, pH7.3.

## Product Images

---



Immunohistochemistry of paraffin-embedded human colon tissue using PACO43757 at dilution of 1:100.