

# STX12 Antibody



PACO43761

---

## Product Information

**Size:**

50ul

**Reactivity:**

Human

**Source:**

Rabbit

**Isotype:**

IgG

**Applications:**

ELISA, IHC

**Recommended dilutions:**

ELISA:1:2000-1:10000, IHC:1:20-1:200

**Protein Background:**

SNARE that acts to regulate protein transport between late endosomes and the trans-Golgi network. The SNARE complex containing STX6, STX12, VAMP4 and VTI1A mediates vesicle fusion (in vitro).

**Gene ID:**

STX12

**Uniprot**

Q86Y82

**Synonyms:**

Syntaxin-12, STX12

**Immunogen:**

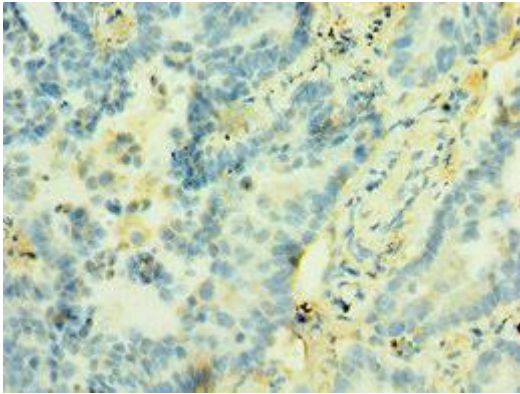
Recombinant Human Syntaxin-12 protein (1-250AA).

**Storage:**

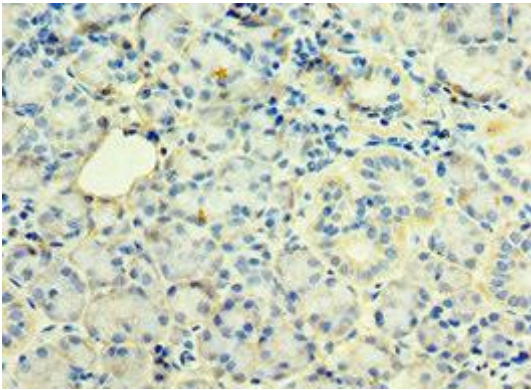
PBS with 0.02% sodium azide, 50% glycerol, pH7.3.

## Product Images

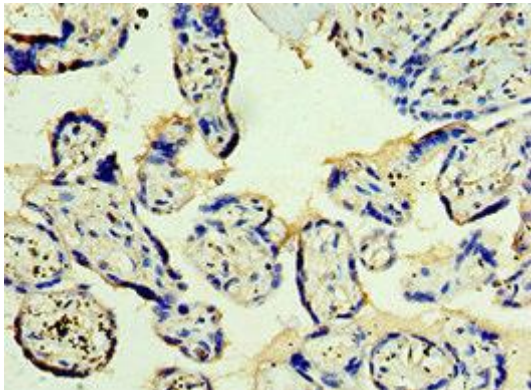
---



Immunohistochemistry of paraffin-embedded human lung cancer using PACO43761 at dilution of 1:100.



Immunohistochemistry of paraffin-embedded human pancreatic tissue using PACO43761 at dilution of 1:100.



Immunohistochemistry of paraffin-embedded human placenta tissue using PACO43761 at dilution of 1:100.