

Product Information

Size:

50ul

Reactivity:

Human

Source:

Rabbit

Isotype:

IgG

Applications:

ELISA, IHC

Recommended dilutions:

ELISA:1:2000-1:10000, IHC:1:20-1:200

Protein Background:

Component of the anaphase promoting complex/cyclosome (APC/C), a cell cycle-regulated E3 ubiquitin ligase that controls progression through mitosis and the G1 phase of the cell cycle. The APC/C complex acts by mediating ubiquitination and subsequent degradation of target proteins: it mainly mediates the formation of 'Lys-11'-linked polyubiquitin chains and, to a lower extent, the formation of 'Lys-48'- and 'Lys-63'-linked polyubiquitin chains.

Gene ID:

ANAPC10

Uniprot

Q9UM13

Synonyms:

Anaphase-promoting complex subunit 10 (APC10) (Cyclosome subunit 10), ANAPC10, APC10

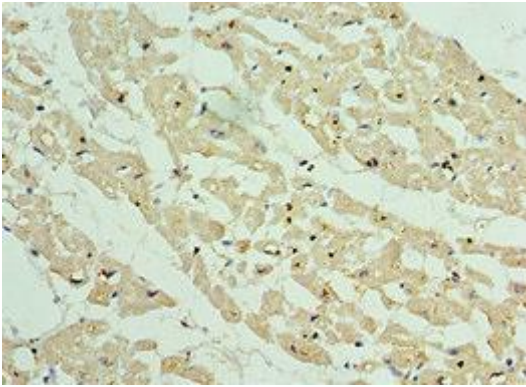
Immunogen:

Recombinant Human Anaphase-promoting complex subunit 10 protein (1-185AA).

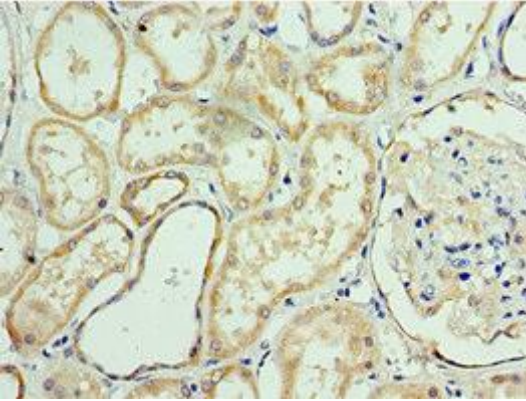
Storage:

PBS with 0.02% sodium azide, 50% glycerol, pH7.3.

Product Images



Immunohistochemistry of paraffin-embedded human heart tissue using PACO43783 at dilution of 1:100.



Immunohistochemistry of paraffin-embedded human kidney tissue using PACO43783 at dilution of 1:100.