

CSTF2 Antibody



PACO43790

Product Information

Size:

50ul

Reactivity:

Human

Source:

Rabbit

Isotype:

IgG

Applications:

ELISA, WB, IHC

Recommended dilutions:

ELISA:1:2000-1:10000, WB:1:500-1:2000,
IHC:1:20-1:200

Protein Background:

One of the multiple factors required for polyadenylation and 3'-end cleavage of mammalian pre-mRNAs. This subunit is directly involved in the binding to pre-mRNAs.

Gene ID:

CSTF2

Uniprot

P33240

Synonyms:

Cleavage stimulation factor subunit 2 (CF-1 64 kDa subunit) (Cleavage stimulation factor 64 kDa subunit) (CSTF 64 kDa subunit) (CstF-64), CSTF2

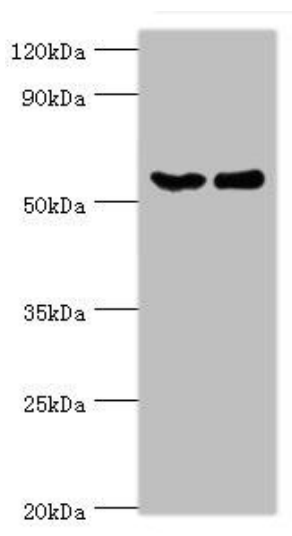
Immunogen:

Recombinant Human Cleavage stimulation factor subunit 2 protein (1-180AA).

Storage:

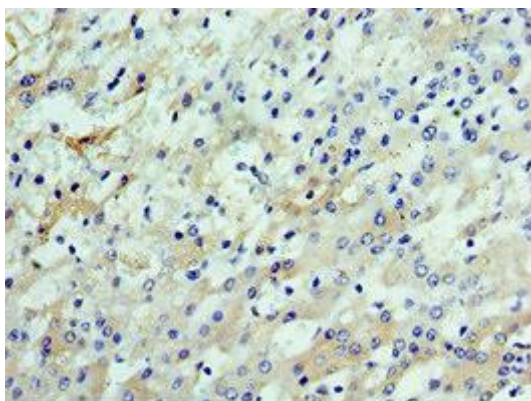
PBS with 0.02% sodium azide, 50% glycerol, pH7.3.

Product Images



Western blot.

All lanes: CSTF2 antibody at 6 μ g/ml. Lane 1: Hela whole cell lysate. Lane 2: Jurkat whole cell lysate. Secondary: Goat polyclonal to rabbit IgG at 1/10000 dilution. Predicted band size: 61, 60 kDa. Observed band size: 61 kDa.



Immunohistochemistry of paraffin-embedded human liver cancer using PACO43790 at dilution of 1:100.