

Product Information

Size:

50ul

Reactivity:

Human

Source:

Rabbit

Isotype:

IgG

Applications:

ELISA, IHC

Recommended dilutions:

ELISA:1:2000-1:10000, IHC:1:20-1:200

Protein Background:

Probably recognizes and binds to some phosphorylated proteins and promotes their ubiquitination and degradation. Likely to be involved in key signaling pathways crucial for normal limb development. May participate in Wnt signaling.

Gene ID:

FBXW4

Uniprot

P57775

Synonyms:

F-box/WD repeat-containing protein 4 (Dactylin) (F-box and WD-40 domain-containing protein 4), FBXW4, FBW4 SHFM3

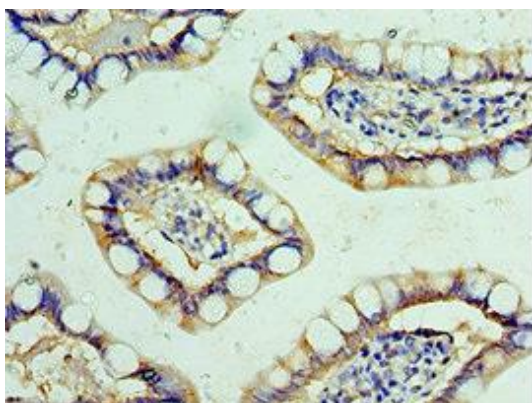
Immunogen:

Recombinant Human F-box/WD repeat-containing protein 4 protein (143-412AA).

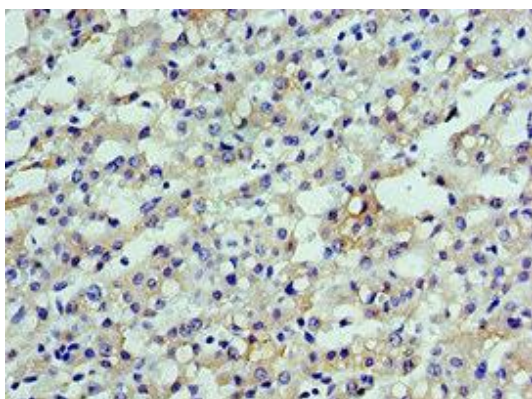
Storage:

PBS with 0.02% sodium azide, 50% glycerol, pH7.3.

Product Images



Immunohistochemistry of paraffin-embedded human small intestine tissue using PACO43797 at dilution of 1:100.



Immunohistochemistry of paraffin-embedded human liver cancer using PACO43797 at dilution of 1:100.