

# CD6 Antibody



PACO43799

---

## Product Information

**Size:**

50ul

**Reactivity:**

Human

**Source:**

Rabbit

**Isotype:**

IgG

**Applications:**

ELISA, IHC

**Recommended dilutions:**

ELISA:1:2000-1:10000, IHC:1:20-1:200

**Protein Background:**

Involved in cell adhesion. Binds to CD166.

**Gene ID:**

CD6

**Uniprot**

P30203

**Synonyms:**

T-cell differentiation antigen CD6 (T12) (TP120) (CD antigen CD6) [Cleaved into: Soluble CD6], CD6

**Immunogen:**

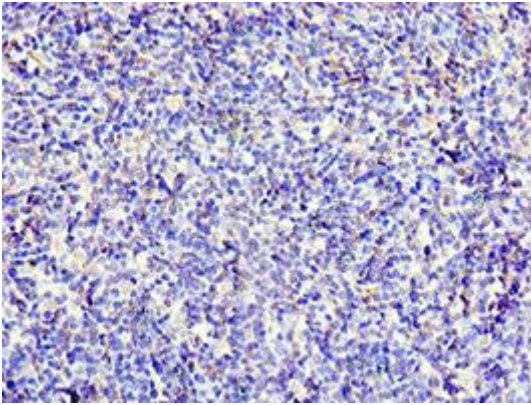
Recombinant Human T-cell differentiation antigen CD6 protein (424-668AA).

**Storage:**

PBS with 0.02% sodium azide, 50% glycerol, pH7.3.

## Product Images

---



Immunohistochemistry of paraffin-embedded human thymus tissue using PACO43799 at dilution of 1:100.