

Product Information

Size:

50ul

Reactivity:

Human

Source:

Rabbit

Isotype:

IgG

Applications:

ELISA, IHC

Recommended dilutions:

ELISA:1:2000-1:10000, IHC:1:20-1:200

Protein Background:

Inhibits the activity of interleukin-36 (IL36A, IL36B and IL36G) by binding to receptor IL1RL2 and preventing its association with the coreceptor IL1RAP for signaling. Part of the IL-36 signaling system that is thought to be present in epithelial barriers and to take part in local inflammatory response; similar to the IL-1 system with which it shares the coreceptor. Proposed to play a role in skin inflammation. May be involved in the innate immune response to fungal pathogens, such as *Aspergillus fumigatus*. May activate an anti-inflammatory signaling pathway by recruiting SIGIRR.

Gene ID:

IL36RN

Uniprot

Q9UBH0

Synonyms:

Interleukin-36 receptor antagonist protein (IL-36Ra) (FIL1 delta) (IL-1-related protein 3) (IL-1RP3) (Interleukin-1 HY1) (IL-1HY1) (Interleukin-1 delta) (IL-1 delta) (Interleukin-1 family member 5) (IL-1F5) (Interleukin-1 receptor antagonist homolog 1) (IL-1ra homolog 1) (Interleukin-1-like protein 1) (IL-1L1), IL36RN, FIL1D IL1F5 IL1HY1 IL1L1 IL1RP3

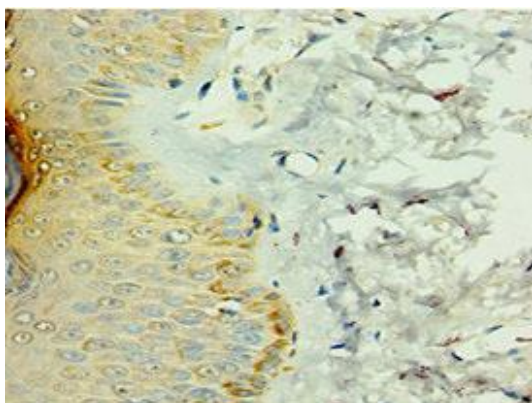
Immunogen:

Recombinant Human Interleukin-36 receptor antagonist protein (1-155AA).

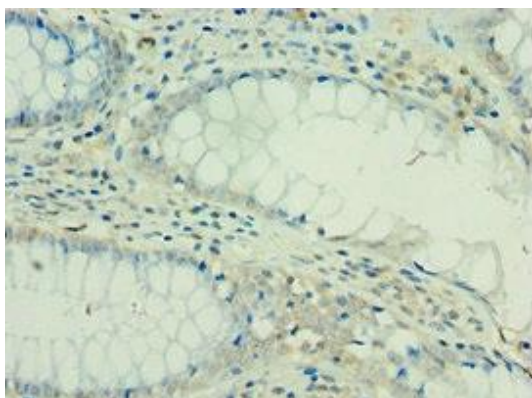
Storage:

PBS with 0.02% sodium azide, 50% glycerol, pH7.3.

Product Images



Immunohistochemistry of paraffin-embedded human skin tissue using PACO43810 at dilution of 1:100.



Immunohistochemistry of paraffin-embedded human colon cancer using PACO43810 at dilution of 1:100.