

KCTD15 Antibody



PACO43813

Product Information

Size:

50ul

Reactivity:

Human

Source:

Rabbit

Isotype:

IgG

Applications:

ELISA, WB, IHC

Recommended dilutions:

ELISA:1:2000-1:10000, WB:1:500-1:2000,
IHC:1:20-1:200

Protein Background:

During embryonic development, interferes with neural crest formation. Inhibits AP2 transcriptional activity by interaction with its activation domain.

Gene ID:

KCTD15

Uniprot

Q96SI1

Synonyms:

BTB/POZ domain-containing protein KCTD15 (Potassium channel tetramerization domain-containing protein 15), KCTD15

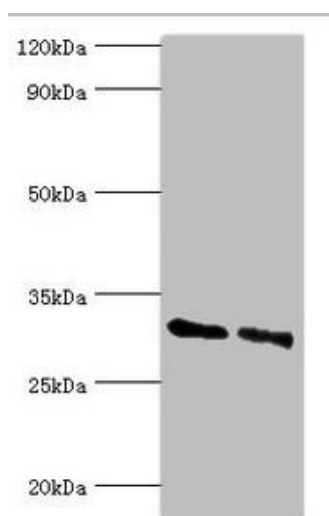
Immunogen:

Recombinant Human BTB/POZ domain-containing protein KCTD15 protein (1-234AA).

Storage:

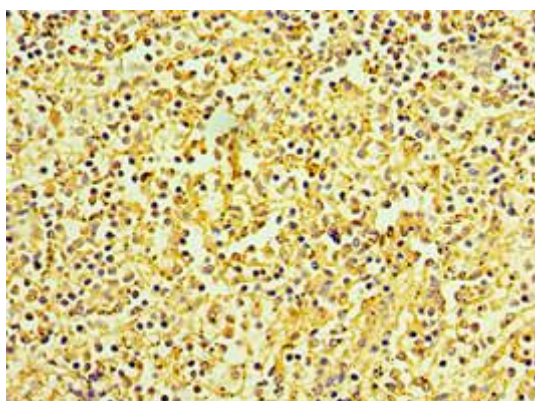
PBS with 0.02% sodium azide, 50% glycerol, pH7.3.

Product Images

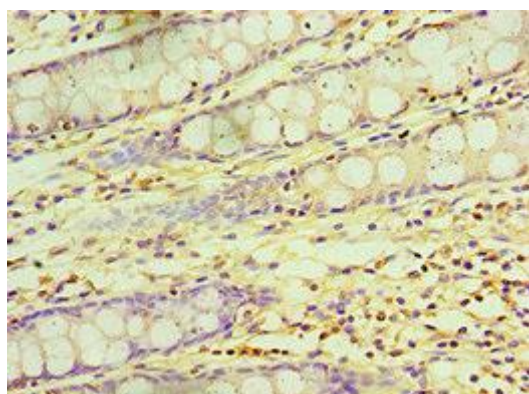


Western blot.

All lanes: KCTD15 antibody at 8 μ g/ml. Lane 1: 293T whole cell lysate. Lane 2: Hela whole cell lysate. Secondary: Goat polyclonal to rabbit IgG at 1/10000 dilution. Predicted band size: 32, 27 kDa. Observed band size: 32 kDa.



Immunohistochemistry of paraffin-embedded human spleen tissue using PACO43813 at dilution of 1:100.



Immunohistochemistry of paraffin-embedded human colon tissue using PACO43813 at dilution of 1:100.