

# MAGEA6 Antibody



PACO43814

---

## Product Information

**Size:**

50ul

**Reactivity:**

Human, Rat

**Source:**

Rabbit

**Isotype:**

IgG

**Applications:**

ELISA, WB, IHC

**Recommended dilutions:**

ELISA:1:2000-1:10000, WB:1:500-1:2000,  
IHC:1:20-1:200

**Protein Background:**

Proposed to enhance ubiquitin ligase activity of RING-type zinc finger-containing E3 ubiquitin-protein ligases. May enhance ubiquitin ligase activity of TRIM28 and stimulate p53/TP53 ubiquitination by TRIM28. Proposed to act through recruitment and/or stabilization of the Ubl-conjugating enzyme (E2) at the E3: substrate complex. May play a role in tumor transformation or aspects of tumor progression. In vitro promotes cell viability in melanoma cell lines.

**Gene ID:**

MAGEA6

**Uniprot**

P43360

**Synonyms:**

Melanoma-associated antigen 6 (Cancer/testis antigen 1.6) (CT1.6) (MAGE-6 antigen) (MAGE3B antigen), MAGEA6, MAGE6

**Immunogen:**

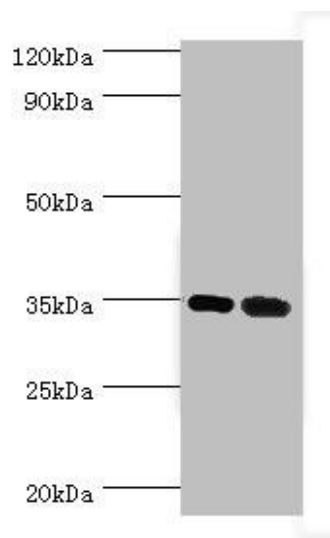
Recombinant Human Melanoma-associated antigen 6 protein (75-314AA).

**Storage:**

PBS with 0.02% sodium azide, 50% glycerol, pH7.3.

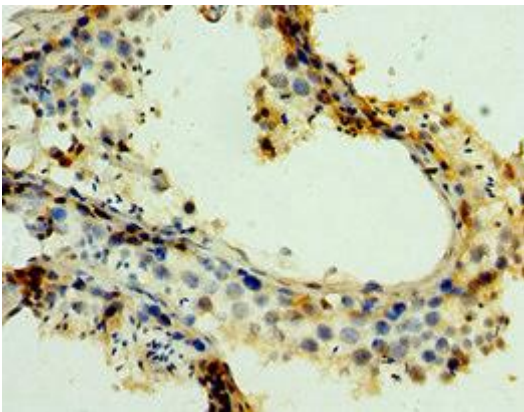
## Product Images

---

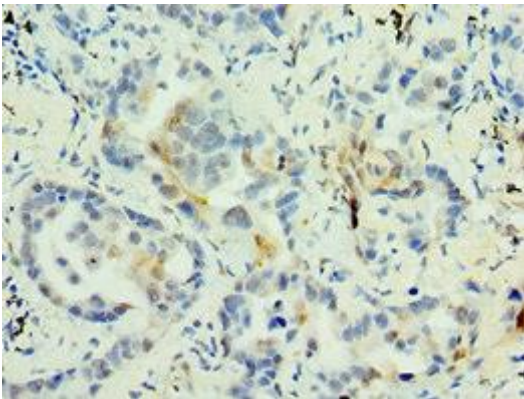


Western blot.

All lanes: MAGEA6 antibody at 7 $\mu$ g/ml. Lane 1: Rat brain tissue. Lane 2: Rat gonad tissue. Secondary: Goat polyclonal to rabbit IgG at 1/10000 dilution. Predicted band size: 35 kDa. Observed band size: 35 kDa.



Immunohistochemistry of paraffin-embedded human testis tissue using PACO43814 at dilution of 1:100.



Immunohistochemistry of paraffin-embedded human lung cancer using PACO43814 at dilution of 1:100.