

P4HA2 Antibody



PACO43821

Product Information

Size:

50ul

Reactivity:

Human

Source:

Rabbit

Isotype:

IgG

Applications:

ELISA, WB, IHC, IP

Recommended dilutions:

ELISA:1:2000-1:10000, WB:1:1000-1:5000,
IHC:1:20-1:200, IP:1:200-1:2000

Protein Background:

Catalyzes the post-translational formation of 4-hydroxyproline in -Xaa-Pro-Gly-sequences in collagens and other proteins.

Gene ID:

P4HA2

Uniprot

O15460

Synonyms:

Prolyl 4-hydroxylase subunit alpha-2 (4-PH alpha-2) (EC 1.14.11.2) (Procollagen-proline,2-oxoglutarate-4-dioxygenase subunit alpha-2), P4HA2

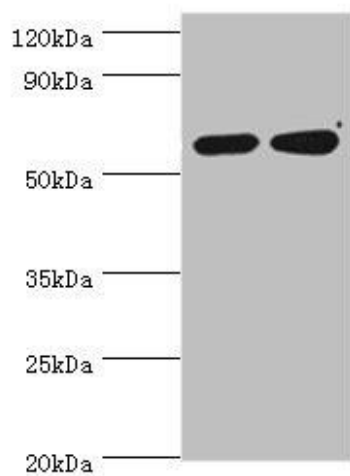
Immunogen:

Recombinant Human Prolyl 4-hydroxylase subunit alpha-2 protein (236-535AA).

Storage:

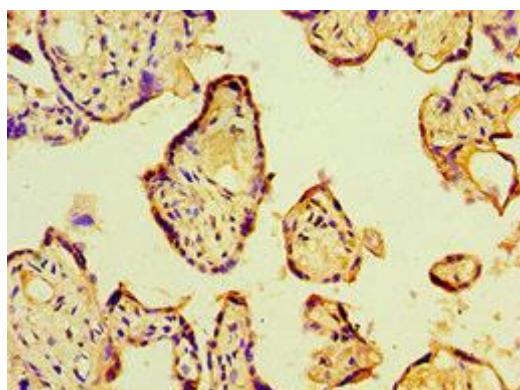
PBS with 0.02% sodium azide, 50% glycerol, pH7.3.

Product Images

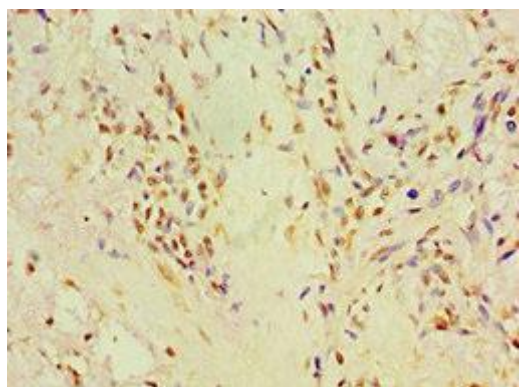


Western blot.

All lanes: P4HA2 antibody at 6 μ g/ml. Lane 1: HepG2 whole cell lysate. Lane 2: 293T whole cell lysate. Secondary: Goat polyclonal to rabbit IgG at 1/10000 dilution. Predicted band size: 61 kDa. Observed band size: 61 kDa.



Immunohistochemistry of paraffin-embedded human placenta tissue using PACO43821 at dilution of 1:100.



Immunohistochemistry of paraffin-embedded human breast cancer using PACO43821 at dilution of 1:100.