

Product Information

Size:

50ul

Reactivity:

Human

Source:

Rabbit

Isotype:

IgG

Applications:

ELISA, WB, IHC

Recommended dilutions:

ELISA:1:2000-1:10000, WB:1:500-1:5000,
IHC:1:20-1:200

Protein Background:

Required for anchoring dihydrolipoamide dehydrogenase (E3) to the dihydrolipoamide transacetylase (E2) core of the pyruvate dehydrogenase complexes of eukaryotes. This specific binding is essential for a functional PDH complex.

Gene ID:

PDHX

Uniprot

O00330

Synonyms:

Pyruvate dehydrogenase protein X component, mitochondrial (Dihydrolipoamide dehydrogenase-binding protein of pyruvate dehydrogenase complex) (E3-binding protein) (E3BP) (Lipoyl-containing pyruvate dehydrogenase complex component X) (proX), PDHX, PDX1

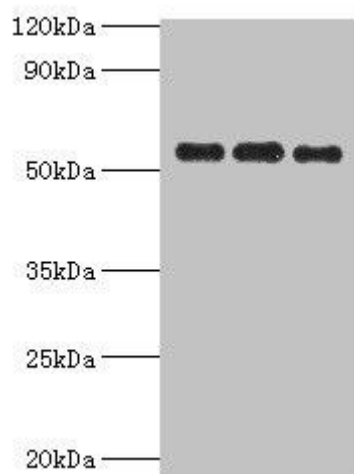
Immunogen:

Recombinant Human Pyruvate dehydrogenase protein X component, mitochondrial protein (1-300AA).

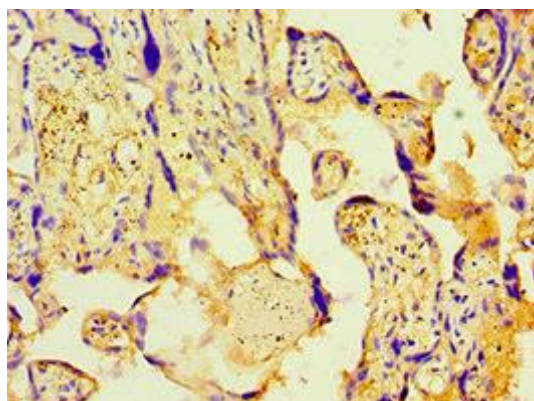
Storage:

PBS with 0.02% sodium azide, 50% glycerol, pH7.3.

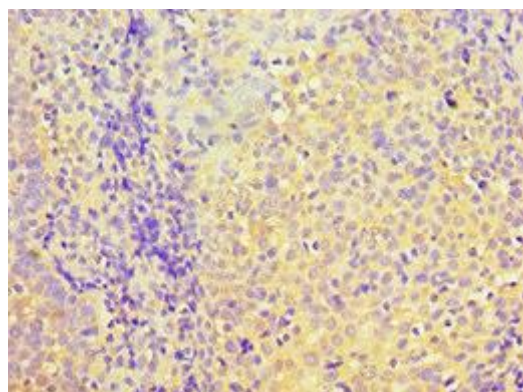
Product Images



Western blot. All lanes: PDHX antibody at 6 μ g/ml. Lane 1: 293T whole cell lysate. Lane 2: PC-3 whole cell lysate. Lane 3: MCF-7 whole cell lysate. Secondary: Goat polyclonal to rabbit IgG at 1/10000 dilution. Predicted band size: 55, 30, 52 kDa. Observed band size: 55 kDa.



Immunohistochemistry of paraffin-embedded human placenta tissue using PACO43825 at dilution of 1:100.



Immunohistochemistry of paraffin-embedded human tonsil tissue using PACO43825 at dilution of 1:100.