

RB1 Antibody



PACO43827

Product Information

Size:

50ul

Reactivity:

Human

Source:

Rabbit

Isotype:

IgG

Applications:

ELISA, IHC

Recommended dilutions:

ELISA:1:2000-1:10000, IHC:1:20-1:200

Protein Background:

Gene ID:

RB1

Uniprot

P06400

Synonyms:

Retinoblastoma-associated protein (p105-Rb) (pRb) (Rb) (pp110), RB1

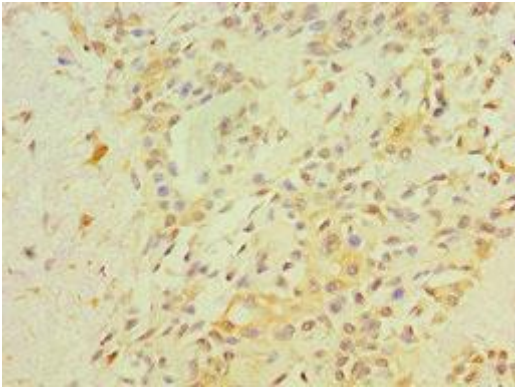
Immunogen:

Recombinant Human Retinoblastoma-associated protein (649-928AA).

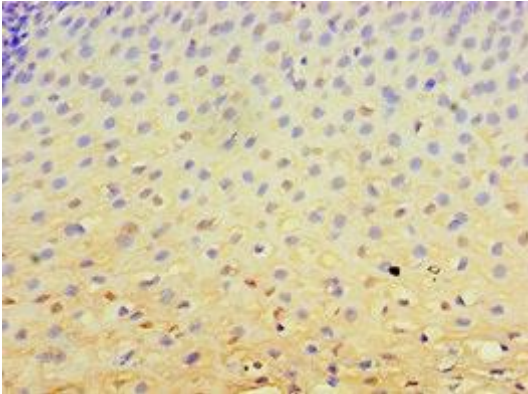
Storage:

PBS with 0.02% sodium azide, 50% glycerol, pH7.3.

Product Images



Immunohistochemistry of paraffin-embedded human breast cancer using PACO43827 at dilution of 1:100.



Immunohistochemistry of paraffin-embedded human esophagus tissue using PACO43827 at dilution of 1:100.