

RET Antibody



PACO43828

Product Information

Size:

50ul

Reactivity:

Human

Source:

Rabbit

Isotype:

IgG

Applications:

ELISA, WB, IHC

Recommended dilutions:

ELISA:1:2000-1:10000, WB:1:500-1:2000,
IHC:1:20-1:200

Protein Background:**Gene ID:**

RET

Uniprot

P07949

Synonyms:

Proto-oncogene tyrosine-protein kinase receptor Ret (EC 2.7.10.1) (Cadherin family member 12) (Proto-oncogene c-Ret) [Cleaved into: Soluble RET kinase fragment; Extracellular cell-membrane anchored RET cadherin 120 kDa fragment], RET, CDHF12 CDHR16 PTC RET51

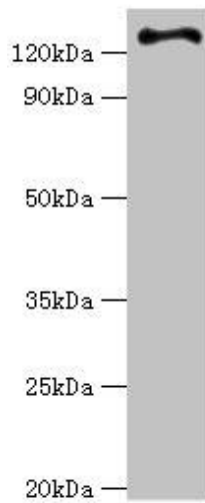
Immunogen:

Recombinant Human Proto-oncogene tyrosine-protein kinase receptor Ret protein (29-300AA).

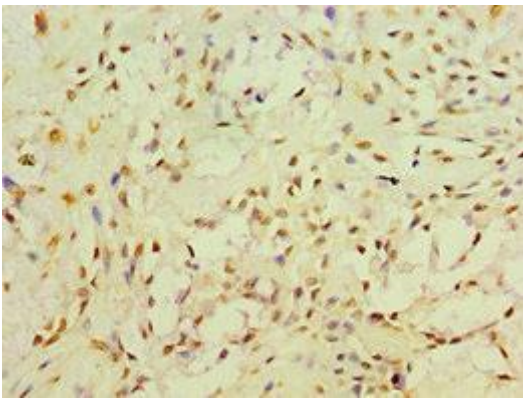
Storage:

PBS with 0.02% sodium azide, 50% glycerol, pH7.3.

Product Images



Western blot. All lanes: RET antibody at 6 μ g/ml + HeLa whole cell lysate. Secondary. Goat polyclonal to rabbit IgG at 1/10000 dilution. Predicted band size: 125, 120 kDa. Observed band size: 125 kDa.



Immunohistochemistry of paraffin-embedded human breast cancer using PACO43828 at dilution of 1:100.