

PACO43832

---

## Product Information

**Size:**

50ul

**Reactivity:**

Human

**Source:**

Rabbit

**Isotype:**

IgG

**Applications:**

ELISA, WB

**Recommended dilutions:**

ELISA:1:2000-1:10000, WB:1:500-1:5000

**Protein Background:**

Cell surface receptor for PLXNB2 that plays an important role in cell-cell signaling. PLXNB2 binding promotes downstream activation of RHOA and phosphorylation of ERBB2 at 'Tyr-1248'. Required for normal brain development, axon guidance and cell migration. Probable signaling receptor which may play a role in myogenic differentiation through activation of the stress-activated MAPK cascade.

**Gene ID:**

SEMA4C

**Uniprot**

Q9C0C4

**Synonyms:**

Semaphorin-4C, SEMA4C, KIAA1739 SEMAI

**Immunogen:**

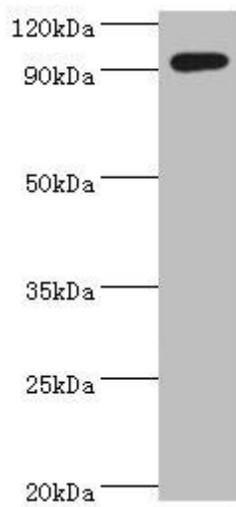
Recombinant Human Semaphorin-4C protein (749-833AA).

**Storage:**

PBS with 0.02% sodium azide, 50% glycerol, pH7.3.

## Product Images

---



Western blot. All lanes: SEMA4C antibody at 10 $\mu$ g/ml + k562 whole cell lysate. Secondary. Goat polyclonal to rabbit IgG at 1/10000 dilution. Predicted band size: 93 kDa. Observed band size: 93 kDa.