

SYT11 Antibody



PACO43839

Product Information

Size:

50ul

Reactivity:

Human, Mouse

Source:

Rabbit

Isotype:

IgG

Applications:

ELISA, WB

Recommended dilutions:

ELISA:1:2000-1:10000, WB:1:200-1:1000

Protein Background:

May be involved in Ca²⁺-dependent exocytosis of secretory vesicles through Ca²⁺ and phospholipid binding to the C2 domain or may serve as Ca²⁺ sensors in the process of vesicular trafficking and exocytosis.

Gene ID:

SYT11

Uniprot

Q9BT88

Synonyms:

Synaptotagmin-11 (Synaptotagmin XI) (SytXI), SYT11, KIAA0080

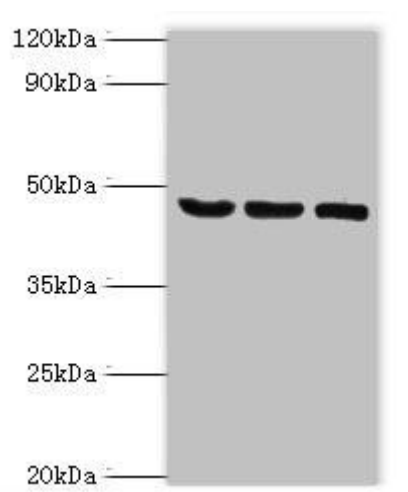
Immunogen:

Recombinant Human Synaptotagmin-11 protein (37-200AA).

Storage:

PBS with 0.02% sodium azide, 50% glycerol, pH7.3.

Product Images



Western blot. All lanes: SYT11 antibody at 14 μ g/ml. Lane 1: COLO205 whole cell lysate. Lane 2: Mouse skeletal muscle tissue. Lane 3: MCF-7 whole cell lysate. Secondary. Goat polyclonal to rabbit IgG at 1/10000 dilution. Predicted band size: 48 kDa. Observed band size: 48 kDa.