

## Product Information

**Size:**

50ul

**Reactivity:**

Human

**Source:**

Rabbit

**Isotype:**

IgG

**Applications:**

ELISA, IHC

**Recommended dilutions:**

ELISA:1:2000-1:10000, IHC:1:20-1:200

**Protein Background:**

May play a critical role in death receptor-induced apoptosis and may target CASP8 and CASP10 to the nucleus. May regulate degradation of intermediate filaments during apoptosis. May play a role in the general transcription machinery in the nucleus and might be an important regulator of the activity of GTF3C3.

**Gene ID:**

DEDD2

**Uniprot**

Q8WXF8

**Synonyms:**

DNA-binding death effector domain-containing protein 2 (DED-containing protein FLAME-3) (FADD-like anti-apoptotic molecule 3), DEDD2, FLAME3

**Immunogen:**

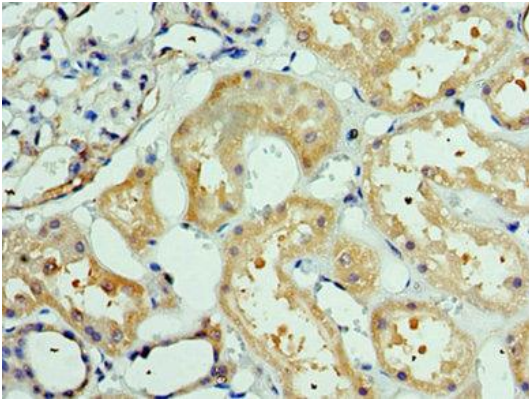
Recombinant Human DNA-binding death effector domain-containing protein 2 protein (1-240AA).

**Storage:**

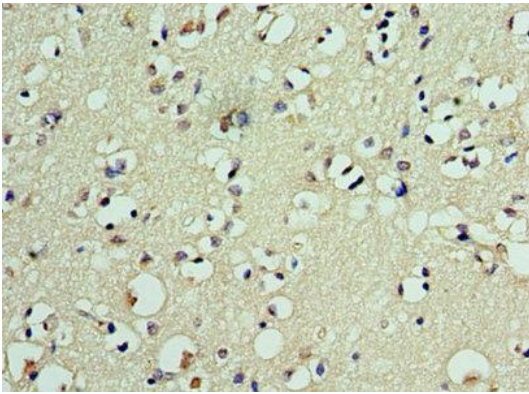
PBS with 0.02% sodium azide, 50% glycerol, pH7.3.

## Product Images

---



Immunohistochemistry of paraffin-embedded human kidney tissue using PACO43845 at dilution of 1:100.



Immunohistochemistry of paraffin-embedded human brain tissue using PACO43845 at dilution of 1:100.