

PACO43850

---

## Product Information

**Size:**

50ul

**Reactivity:**

Human

**Source:**

Rabbit

**Isotype:**

IgG

**Applications:**

ELISA, WB

**Recommended dilutions:**

ELISA:1:2000-1:10000, WB:1:200-1:1000

**Protein Background:**

Functions as a component of the PCAF complex. The PCAF complex is capable of efficiently acetylating histones in a nucleosomal context. The PCAF complex could be considered as the human version of the yeast SAGA complex.

**Gene ID:**

TAF5L

**Uniprot**

O75529

**Synonyms:**

TAF5-like RNA polymerase II p300/CBP-associated factor-associated factor 65 kDa subunit 5L (PCAF-associated factor 65 beta) (PAF65-beta), TAF5L, PAF65B

**Immunogen:**

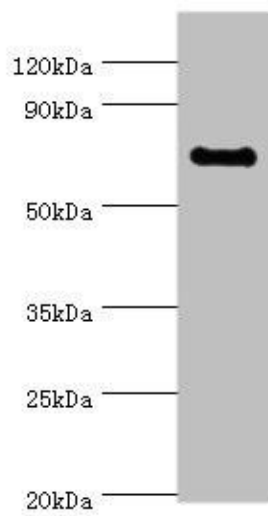
Recombinant Human TAF5-like RNA polymerase II p300/CBP-associated factor-associated factor 65 kDa subunit 5L protein (1-325AA).

**Storage:**

PBS with 0.02% sodium azide, 50% glycerol, pH7.3.

## Product Images

---



Western blot. All lanes: TAF5L antibody at 10 $\mu$ g/ml + Jurkat whole cell lysate. Secondary. Goat polyclonal to rabbit IgG at 1/10000 dilution. Predicted band size: 67, 37 kDa. Observed band size: 67 kDa.