

Product Information

Size:

50ul

Reactivity:

Human, Mouse

Source:

Rabbit

Isotype:

IgG

Applications:

ELISA, WB, IHC

Recommended dilutions:

ELISA:1:2000-1:10000, WB:1:500-1:2000,
IHC:1:20-1:200

Protein Background:

Kinase that plays a key role in the regulation of glucose and fatty acid, metabolism and homeostasis via phosphorylation of the pyruvate dehydrogenase subunits PDHA1 and PDHA2. This inhibits pyruvate dehydrogenase activity, and thereby regulates metabolite flux through the tricarboxylic acid, cycle, down-regulates aerobic respiration and inhibits the formation of acetyl-coenzyme A from pyruvate. Inhibition of pyruvate dehydrogenase decreases glucose utilization and increases fat metabolism. Mediates cellular responses to insulin. Plays an important role in maintaining normal blood glucose levels and in metabolic adaptation to nutrient availability. Via its regulation of pyruvate dehydrogenase activity, plays an important role in maintaining normal blood pH and in preventing the accumulation of ketone bodies under starvation. Plays a role in the regulation of cell proliferation and in resistance to apoptosis under oxidative stress. Plays a role in p53/TP53-mediated apoptosis.

Gene ID:

PDK2

Uniprot

Q15119

Synonyms:

[Pyruvate dehydrogenase (acetyl-transferring)] kinase isozyme 2, mitochondrial (EC 2.7.11.2) (Pyruvate dehydrogenase kinase isoform 2) (PDH kinase 2) (PDKII), PDK2, PDHK2

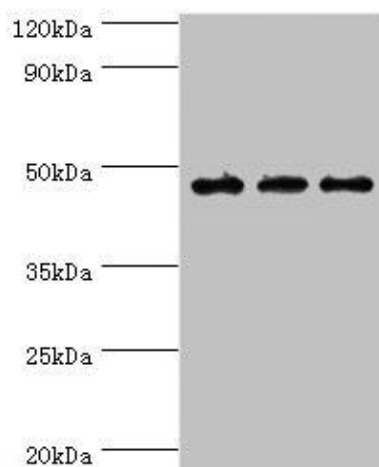
Immunogen:

Recombinant Human [Pyruvate dehydrogenase (acetyl-transferring)] kinase isozyme 2, mitochondrial protein (128-407AA).

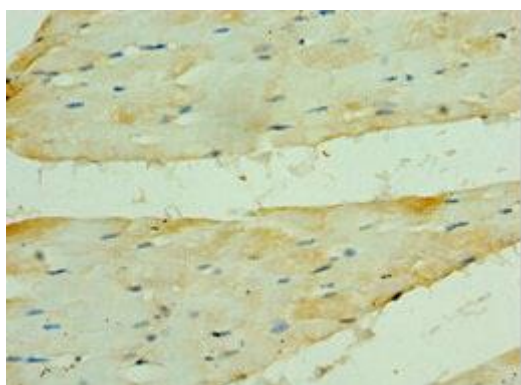
Storage:

PBS with 0.02% sodium azide, 50% glycerol, pH7.3.

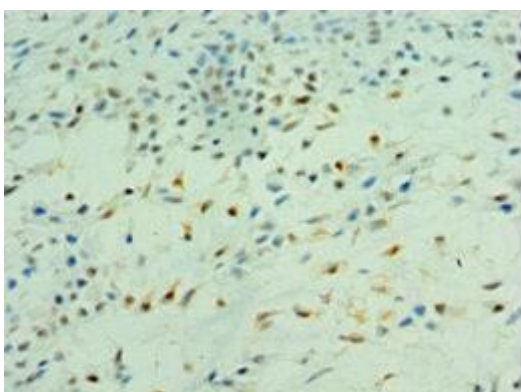
Product Images



Western blot. All lanes: PDK2 antibody at 6 μ g/ml. Lane 1: Mouse heart tissue. Lane 2: HeLa whole cell lysate. Lane 2: Mouse skeletal muscle tissue. Secondary. Goat polyclonal to rabbit IgG at 1/10000 dilution. Predicted band size: 47, 39 kDa. Observed band size: 47 kDa.



Immunohistochemistry of paraffin-embedded human skeletal muscle tissue using PACO43853 at dilution of 1:100.



Immunohistochemistry of paraffin-embedded human breast cancer tissue using PACO43853 at dilution of 1:100.