

GTF2H2C Antibody



PACO43868

Product Information

Size:

50ul

Reactivity:

Human

Source:

Rabbit

Isotype:

IgG

Applications:

ELISA, WB, IHC

Recommended dilutions:

ELISA:1:2000-1:10000, WB:1:200-1:1000,
IHC:1:20-1:200

Protein Background:

Component of the core-TFIID basal transcription factor involved in nucleotide excision repair (NER) of DNA and, when complexed to CAK, in RNA transcription by RNA polymerase II.

Gene ID:

GTF2H2C

Uniprot

Q6P1K8

Synonyms:

General transcription factor IIH subunit 2-like protein (General transcription factor IIH polypeptide 2-like protein), GTF2H2C; GTF2H2C_2GTF2H2D

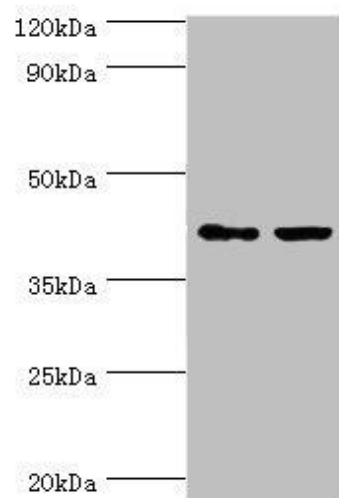
Immunogen:

Recombinant Human General transcription factor IIH subunit 2-like protein (1-260AA).

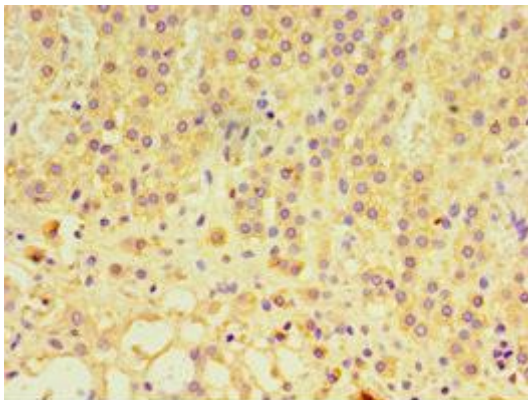
Storage:

PBS with 0.02% sodium azide, 50% glycerol, pH7.3.

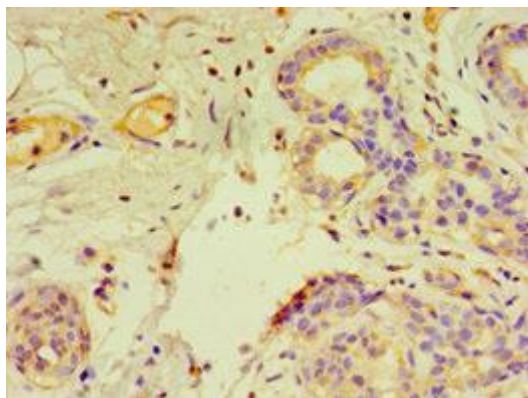
Product Images



Western blot. All lanes: GTF2H2C antibody at 8 μ g/ml. Lane 1: HepG2 whole cell lysate. Lane 2: K562 whole cell lysate. Secondary. Goat polyclonal to rabbit IgG at 1/10000 dilution. Predicted band size: 44 kDa. Observed band size: 44 kDa.



Immunohistochemistry of paraffin-embedded human adrenal gland tissue using PACO43868 at dilution of 1:100.



Immunohistochemistry of paraffin-embedded human breast cancer using PACO43868 at dilution of 1:100.