

# SAP18 Antibody



PACO43875

---

## Product Information

**Size:**

50ul

**Reactivity:**

Human

**Source:**

Rabbit

**Isotype:**

IgG

**Applications:**

ELISA, IHC

**Recommended dilutions:**

ELISA:1:2000-1:10000, IHC:1:20-1:200

**Protein Background:**

**Gene ID:**

SAP18

**Uniprot**

O00422

**Synonyms:**

Histone deacetylase complex subunit SAP18 (18 kDa Sin3-associated polypeptide) (2HOR0202) (Cell growth-inhibiting gene 38 protein) (Sin3-associated polypeptide p18), SAP18

**Immunogen:**

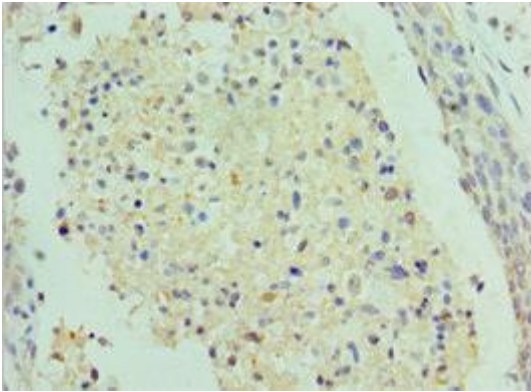
Recombinant Human Histone deacetylase complex subunit SAP18 protein (2-153AA).

**Storage:**

PBS with 0.02% sodium azide, 50% glycerol, pH7.3.

## Product Images

---



Immunohistochemistry of paraffin-embedded human cervical cancer using PACO43875 at dilution of 1:100.