

PACO43915

Product Information

Size:

50ul

Reactivity:

Human

Source:

Rabbit

Isotype:

IgG

Applications:

ELISA, IHC

Recommended dilutions:

ELISA:1:2000-1:10000, IHC:1:20-1:200

Protein Background:

Gene ID:

IFNL3

Uniprot

Q8IZI9

Synonyms:

Interferon lambda-3 (IFN-lambda-3) (Cytokine Zcyto22) (Interleukin-28B) (IL-28B) (Interleukin-28C) (IL-28C), IFNL3, IL28B IL28C ZCYTO22

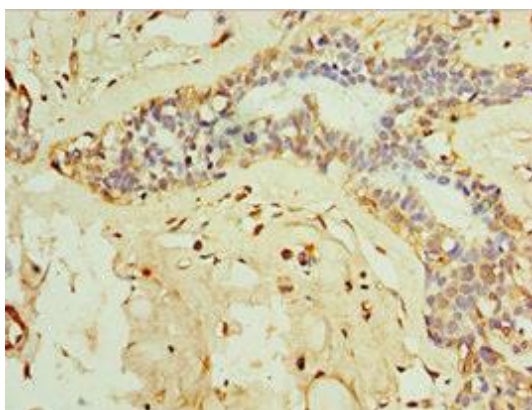
Immunogen:

Recombinant Human Interferon lambda-3 protein (22-196AA).

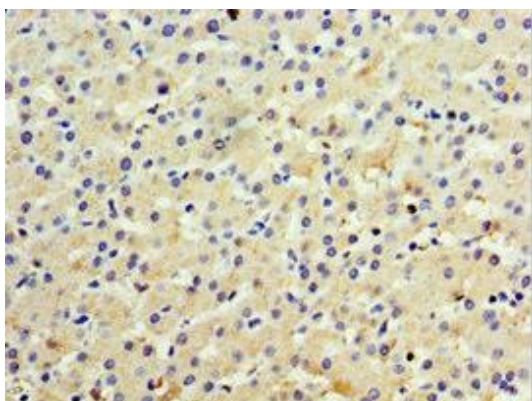
Storage:

PBS with 0.02% sodium azide, 50% glycerol, pH7.3.

Product Images



Immunohistochemistry of paraffin-embedded human breast cancer using PACO43915 at dilution of 1:100.



Immunohistochemistry of paraffin-embedded human liver cancer using PACO43915 at dilution of 1:100.