

SERPINA12 Antibody



PACO43919

Product Information

Size:

50ul

Reactivity:

Human

Source:

Rabbit

Isotype:

IgG

Applications:

ELISA, IHC

Recommended dilutions:

ELISA:1:2000-1:10000, IHC:1:20-1:200

Protein Background:

Adipokine that modulates insulin action by specifically inhibiting its target protease KLK7 in white adipose tissues.

Gene ID:

SERPINA12

Uniprot

Q8IW75

Synonyms:

Serpin A12 (OL-64) (Visceral adipose tissue-derived serine protease inhibitor) (Vaspin) (Visceral adipose-specific serpin), SERPINA12

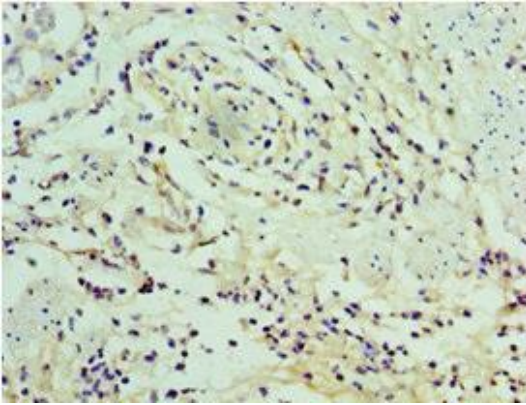
Immunogen:

Recombinant Human Serpin A12 protein (20-320AA).

Storage:

PBS with 0.02% sodium azide, 50% glycerol, pH7.3.

Product Images



Immunohistochemistry of paraffin-embedded human epityphlon tissue using PACO43919 at dilution of 1:100.