

---

## Product Information

**Size:**

50ul

**Reactivity:**

Human

**Source:**

Rabbit

**Isotype:**

IgG

**Applications:**

ELISA, WB, IHC

**Recommended dilutions:**

ELISA:1:2000-1:10000, WB:1:200-1:1000,  
IHC:1:20-1:200

**Protein Background:**

Bone marrow-derived monocyte and paracrine-acting protein that promotes cardiac myocyte survival and adaptive angiogenesis for cardiac protection and/or repair after myocardial infarction (MI). Stimulates endothelial cell proliferation through a MAPK1/3-, STAT3- and CCND1-mediated signaling pathway. Inhibits cardiac myocyte apoptosis in a PI3K/AKT-dependent signaling pathway. Involved in endothelial cell proliferation and angiogenesis.

**Gene ID:**

MYDGF

**Uniprot**

Q969H8

**Synonyms:**

Myeloid-derived growth factor (MYDGF) (Interleukin-25) (IL-25) (Stromal cell-derived growth factor SF20), MYDGF, C19orf10 IL25

**Immunogen:**

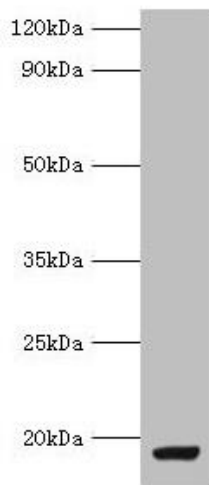
Recombinant Human Myeloid-derived growth factor protein (32-173AA).

**Storage:**

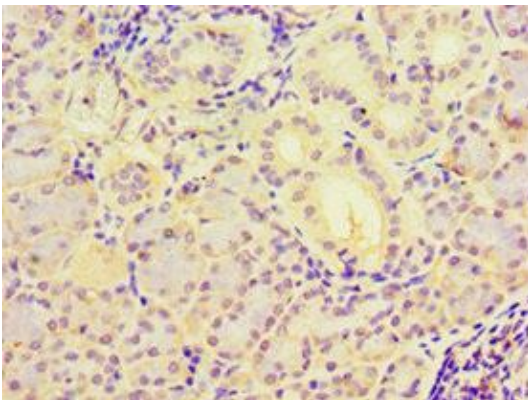
PBS with 0.02% sodium azide, 50% glycerol, pH7.3.

## Product Images

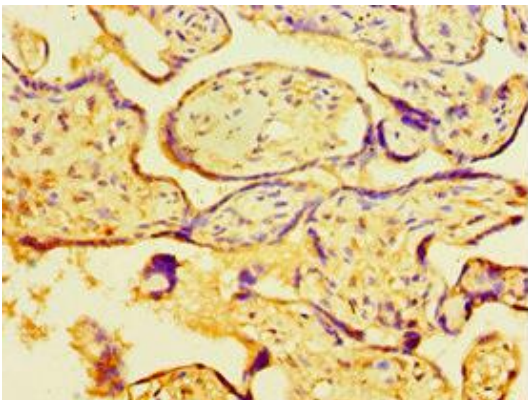
---



Western blot. All lanes: MYDGF antibody at 9 $\mu$ g/ml + MCF-7 whole cell lysate. Secondary. Goat polyclonal to rabbit IgG at 1/10000 dilution. Predicted band size: 19 kDa. Observed band size: 19 kDa.



Immunohistochemistry of paraffin-embedded human pancreatic tissue using PACO43931 at dilution of 1:100.



Immunohistochemistry of paraffin-embedded human placenta tissue using PACO43931 at dilution of 1:100.