

# MOG Antibody



PACO43941

---

## Product Information

**Size:**

50ul

**Reactivity:**

Human

**Source:**

Rabbit

**Isotype:**

IgG

**Applications:**

ELISA, IHC

**Recommended dilutions:**

ELISA:1:2000-1:10000, IHC:1:20-1:200

**Protein Background:**

Mediates homophilic cell-cell adhesion. Minor component of the myelin sheath. May be involved in completion and/or maintenance of the myelin sheath and in cell-cell communication.

**Gene ID:**

MOG

**Uniprot**

Q16653

**Synonyms:**

Myelin-oligodendrocyte glycoprotein, MOG

**Immunogen:**

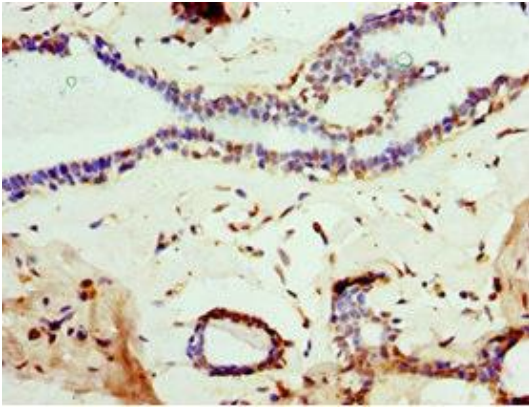
Recombinant Human Myelin-oligodendrocyte glycoprotein protein (30-154AA).

**Storage:**

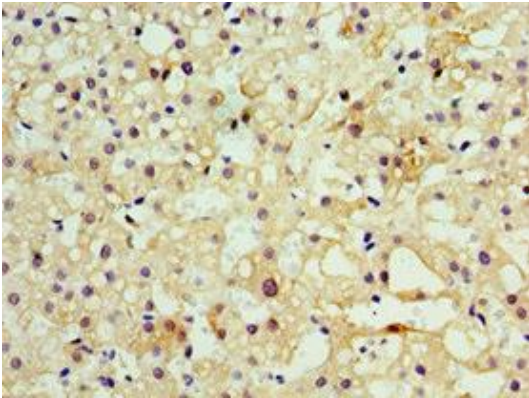
PBS with 0.02% sodium azide, 50% glycerol, pH7.3.

## Product Images

---



Immunohistochemistry of paraffin-embedded human breast cancer using PACO43941 at dilution of 1:100.



Immunohistochemistry of paraffin-embedded human liver cancer using PACO43941 at dilution of 1:100.