

PACO43947

---

## Product Information

**Size:**

50ul

**Reactivity:**

Human

**Source:**

Rabbit

**Isotype:**

IgG

**Applications:**

ELISA, IHC

**Recommended dilutions:**

ELISA:1:2000-1:10000, IHC:1:20-1:200

**Protein Background:**

DNA-binding helicase that specifically binds to the promoter of target genes, leading to chromatin remodeling, possibly by promoting deposition of histone H3.3. Involved in myogenesis via interaction with MYOD1: binds to myogenic gene regulatory sequences and mediates incorporation of histone H3.3 prior to the onset of myogenic gene expression, promoting their expression.

**Gene ID:**

CHD2

**Uniprot**

O14647

**Synonyms:**

Chromodomain-helicase-DNA-binding protein 2 (CHD-2) (EC 3.6.4.12) (ATP-dependent helicase CHD2), CHD2

**Immunogen:**

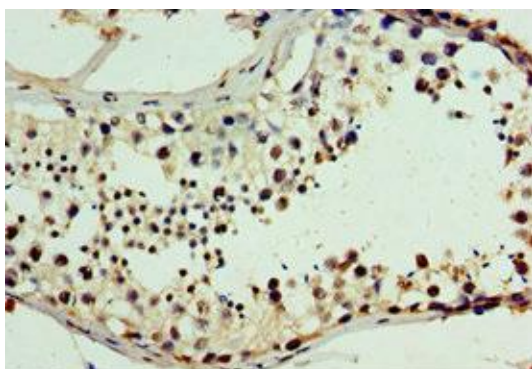
Recombinant Human Chromodomain-helicase-DNA-binding protein 2 protein (1569-1828AA).

**Storage:**

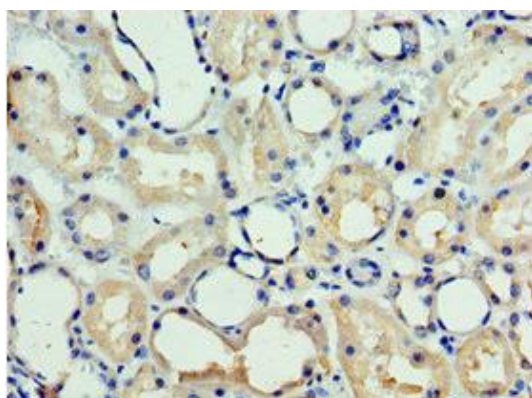
PBS with 0.02% sodium azide, 50% glycerol, pH7.3.

## Product Images

---



Immunohistochemistry of paraffin-embedded human testis tissue using PACO43947 at dilution of 1:100.



Immunohistochemistry of paraffin-embedded human kidney tissue using PACO43947 at dilution of 1:100.