

## Product Information

**Size:**

50ul

**Reactivity:**

Human, Mouse

**Source:**

Rabbit

**Isotype:**

IgG

**Applications:**

ELISA, WB, IHC

**Recommended dilutions:**

ELISA:1:2000-1:10000, WB:1:200-1:1000,  
IHC:1:20-1:200

**Protein Background:**

Protein kinase that plays a role in vesicle-mediated transport processes and exocytosis. Regulates GH1 release by brain neurons. Phosphorylates NSF, and thereby regulates NSF oligomerization. Required for normal spermatogenesis. Regulates neuron differentiation and dendrite development. Plays a role in the regulation of insulin secretion in response to changes in blood glucose levels. Can phosphorylate CCNY at 'Ser-336' (in vitro).

**Gene ID:**

CDK16

**Uniprot**

Q00536

**Synonyms:**

Cyclin-dependent kinase 16 (EC 2.7.11.22) (Cell division protein kinase 16) (PCTAIRE-motif protein kinase 1) (Serine/threonine-protein kinase PCTAIRE-1), CDK16, PCTAIRE1, PCTK1

**Immunogen:**

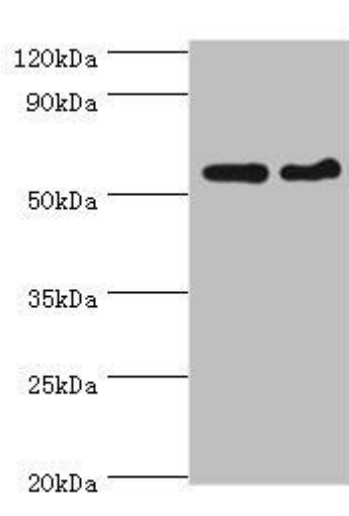
Recombinant Human Cyclin-dependent kinase 16 protein (277-496AA).

**Storage:**

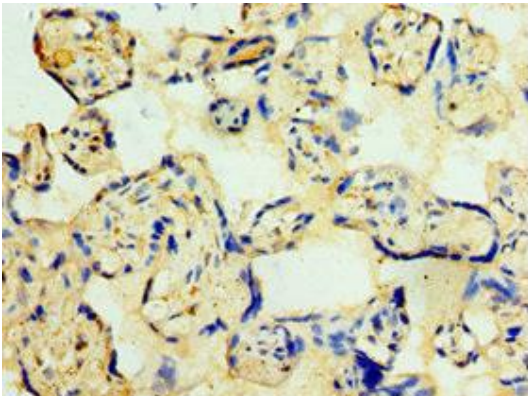
PBS with 0.02% sodium azide, 50% glycerol, pH7.3.

## Product Images

---



Western blot. All lanes: CDK16 antibody at 5 $\mu$ g/ml. Lane 1: Mouse brain tissue. Lane 2: Mouse small intestine tissue. Secondary: Goat polyclonal to rabbit IgG at 1/10000 dilution. Predicted band size: 56, 64, 57 kDa. Observed band size: 56 kDa.



Immunohistochemistry of paraffin-embedded human placenta tissue using PACO43952 at dilution of 1:100.