

PACO43973

---

## Product Information

**Size:**

50ul

**Reactivity:**

Human, Rat

**Source:**

Rabbit

**Isotype:**

IgG

**Applications:**

ELISA, WB, IHC

**Recommended dilutions:**

ELISA:1:2000-1:10000, WB:1:500-1:2000,  
IHC:1:20-1:200

**Protein Background:**

Lectin that binds to various sugars including fucose and mannose. Has a higher affinity for fucose compared to mannose. Does not bind to glucose, N-acetylglucosamine and N-acetylgalactosamine. Also binds lipopolysaccharides (LPS). Involved in fundamental development serving as a guidance cue for neural crest cell migration.

**Gene ID:**

COLEC11

**Uniprot**

Q9BWP8

**Synonyms:**

Collectin-11 (Collectin kidney protein 1) (CL-K1), COLEC11

**Immunogen:**

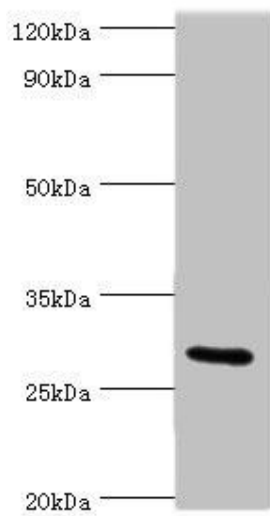
Recombinant Human Collectin-11 protein (26-271AA).

**Storage:**

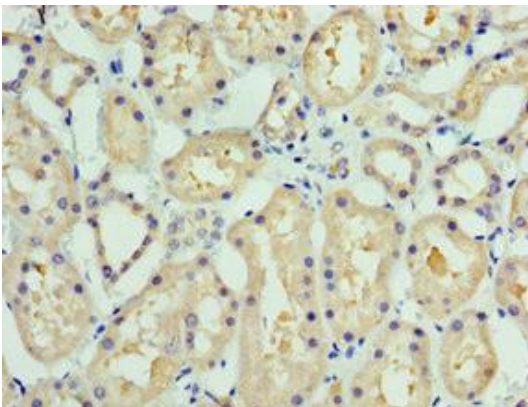
PBS with 0.02% sodium azide, 50% glycerol, pH7.3.

## Product Images

---



Western blot. All lanes: COLEC11 antibody at 4 $\mu$ g/ml + Rat liver tissue. Secondary. Goat polyclonal to rabbit IgG at 1/10000 dilution. Predicted band size: 29, 27, 22, 30, 25, 24, 31 kDa. Observed band size: 29 kDa.



Immunohistochemistry of paraffin-embedded human kidney tissue using PACO43973 at dilution of 1:100.