

APBB1IP Antibody



PACO44010

Product Information

Size:

50ul

Reactivity:

Human, Rat

Source:

Rabbit

Isotype:

IgG

Applications:

ELISA, WB, IHC

Recommended dilutions:

ELISA:1:2000-1:10000, WB:1:200-1:1000,
IHC:1:20-1:200

Protein Background:

Appears to function in the signal transduction from Ras activation to actin cytoskeletal remodeling. Suppresses insulin-induced promoter activities through AP1 and SRE. Mediates Rap1-induced adhesion.

Gene ID:

APBB1IP

Uniprot

Q7Z5R6

Synonyms:

Amyloid beta A4 precursor protein-binding family B member 1-interacting protein (APBB1-interacting protein 1) (Proline-rich EVH1 ligand 1) (PREL-1) (Proline-rich protein 73) (Rap1-GTP-interacting adapter molecule) (RIAM) (Retinoic acid, responsive proline-rich protein 1) (RARP-1), APBB1IP, PREL1 RARP1 RIAM

Immunogen:

Recombinant Human Amyloid β A4 precursor protein-binding family B member 1-interacting protein (1-150AA).

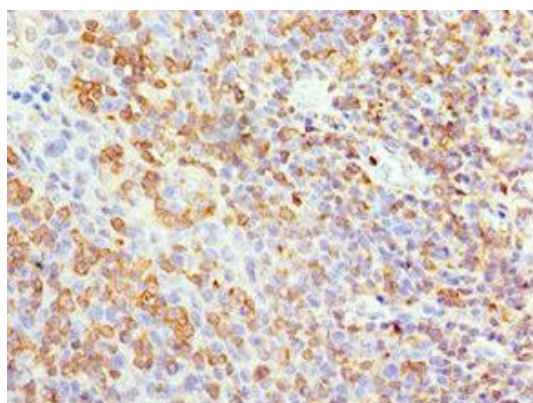
Storage:

PBS with 0.02% sodium azide, 50% glycerol, pH7.3.

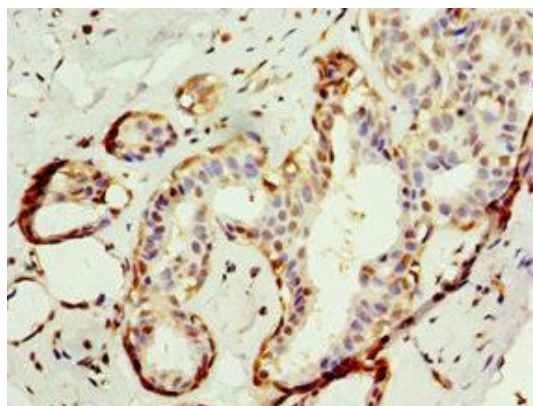
Product Images



Western blot. All lanes: APBB1IP antibody at 4 μ g/ml. Lane 1: HL60 whole cell lysate. Lane 2: Rat spleen tissue. Secondary. Goat polyclonal to rabbit IgG at 1/10000 dilution. Predicted band size: 74, 19 kDa. Observed band size: 74 kDa.



Immunohistochemistry of paraffin-embedded human tonsil tissue using PACO44010 at dilution of 1:100.



Immunohistochemistry of paraffin-embedded human breast cancer using PACO44010 at dilution of 1:100.