

### Product Information

**Size:**

50ul

**Reactivity:**

Human

**Source:**

Rabbit

**Isotype:**

IgG

**Applications:**

ELISA, WB, IHC

**Recommended dilutions:**

ELISA:1:2000-1:10000, WB:1:200-1:1000,  
IHC:1:20-1:200

**Protein Background:**

Nucleolin is the major nucleolar protein of growing eukaryotic cells. It is found associated with intranucleolar chromatin and pre-ribosomal particles. It induces chromatin decondensation by binding to histone H1. It is thought to play a role in pre-rRNA transcription and ribosome assembly. May play a role in the process of transcriptional elongation. Binds RNA oligonucleotides with 5'-UUAGGG-3' repeats more tightly than the telomeric single-stranded DNA 5'-TTAGGG-3' repeats.

**Gene ID:**

NCL

**Uniprot**

P19338

**Synonyms:**

Nucleolin (Protein C23), NCL

**Immunogen:**

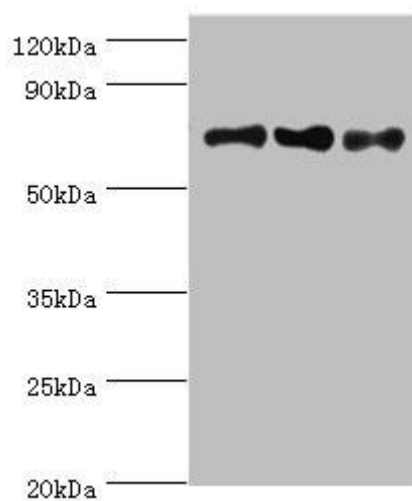
Recombinant Human Nucleolin protein (411-710AA).

**Storage:**

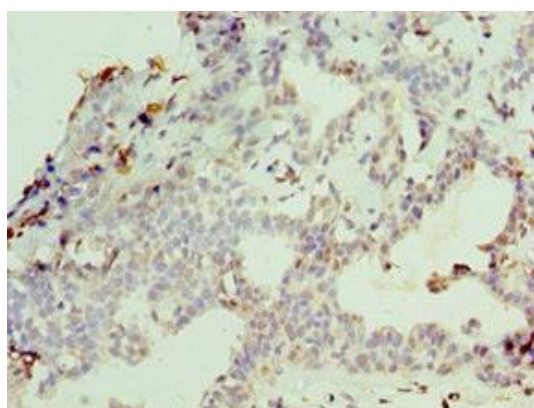
PBS with 0.02% sodium azide, 50% glycerol, pH7.3.

## Product Images

---



Western blot. All lanes: NCL antibody at 8 $\mu$ g/ml. Lane 1: Jurkat whole cell lysate. Lane 2: HeLa whole cell lysate. Lane 3: 293T whole cell lysate. Secondary. Goat polyclonal to rabbit IgG at 1/10000 dilution. Predicted band size: 77 kDa. Observed band size: 77 kDa.



Immunohistochemistry of paraffin-embedded human breast cancer using PACO44015 at dilution of 1:100.