

PACO44016

Product Information

Size:

50ul

Reactivity:

Human, Mouse

Source:

Rabbit

Isotype:

IgG

Applications:

ELISA, WB, IHC

Recommended dilutions:

ELISA:1:2000-1:10000, WB:1:200-1:1000,
IHC:1:20-1:200

Protein Background:

This gene encodes a member of the AAA (ATPases associated with diverse cellular activities) superfamily. Multiple transcript variants encoding different isoforms have been found for this gene. Two encoded proteins, described as major and minor isoforms, have been localized to distinct regions of the nucleus. The largest encoded protein (major isoform) has been localized to the nucleolus and shown to participate in ribosome biosynthesis (PMID: 15469983, 16782053), while the minor isoform has been localized to the nucleoplasmin.

Gene ID:

NVL

Uniprot

O15381

Synonyms:

Nuclear valosin-containing protein-like (NVLp) (Nuclear VCP-like protein), NVL

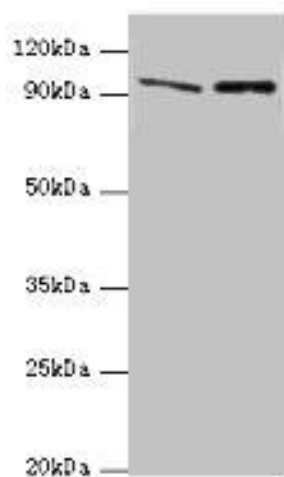
Immunogen:

Recombinant Human Nuclear valosin-containing protein-like protein(340-520AA).

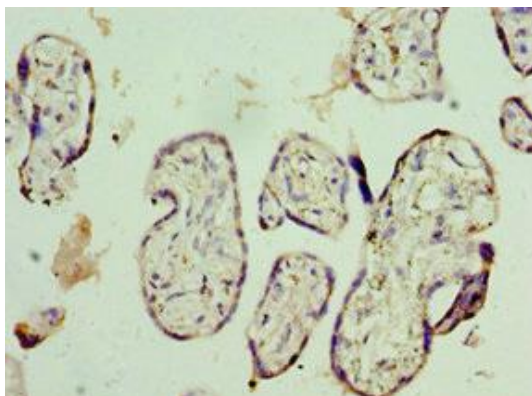
Storage:

PBS with 0.02% sodium azide, 50% glycerol, pH7.3.

Product Images



Western blot. All lanes: NVL antibody at 10µg/ml. Lane 1: Mouse thymus tissue. Lane 2: Hela whole cell lysate. Secondary. Goat polyclonal to rabbit IgG at 1/10000 dilution. Predicted band size: 96, 83, 73, 74, 86 kDa. Observed band size: 96 kDa.



Immunohistochemistry of paraffin-embedded human placenta tissue using PACO44016 at dilution of 1:100.