

Product Information

Size:

50ul

Reactivity:

Human, Mouse

Source:

Rabbit

Isotype:

IgG

Applications:

ELISA, WB, IHC, IF

Recommended dilutions:

ELISA:1:2000-1:10000, WB:1:200-1:1000,
IHC:1:20-1:200, IF:1:50-1:200

Protein Background:

Inhibits signal transduction by increasing the GTPase activity of G protein alpha subunits thereby driving them into their inactive GDP-bound form. Binds selectively to G(z)-alpha and G(alpha)-i2 subunits, accelerates their GTPase activity and regulates their signaling activities. The G(z)-alpha activity is inhibited by the phosphorylation and palmitoylation of the G-protein. Negatively regulates mu-opioid receptor-mediated activation of the G-proteins.

Gene ID:

RGS20

Uniprot

O76081

Synonyms:

Regulator of G-protein signaling 20 (RGS20) (Gz-selective GTPase-activating protein) (G(z)GAP) (Gz-GAP) (Regulator of G-protein signaling Z1) (Regulator of Gz-selective protein signaling 1), RGS20, RGSZ1 ZGAP1

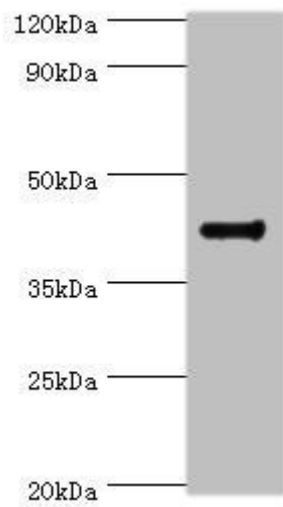
Immunogen:

Recombinant Human Regulator of G-protein signaling 20 protein (1-241AA).

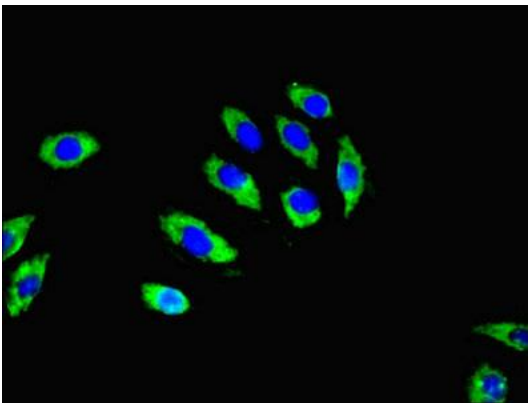
Storage:

PBS with 0.02% sodium azide, 50% glycerol, pH7.3.

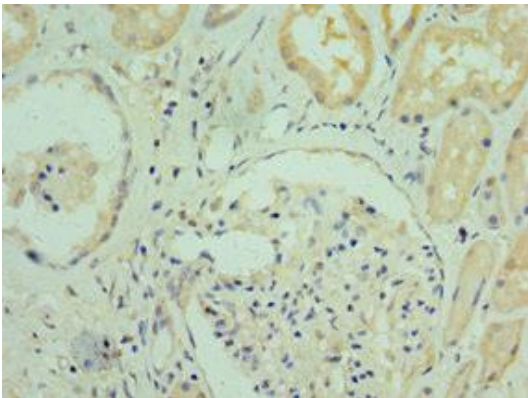
Product Images



Western blot. All lanes: RGS20 antibody at 8 μ g/ml + Mouse brain tissue. Secondary. Goat polyclonal to rabbit IgG at 1/10000 dilution. Predicted band size: 44, 32, 22, 18, 26, 28 kDa. Observed band size: 44 kDa.



Immunofluorescent analysis of A549 cells using PACO44021 at dilution of 1:100 and Alexa Fluor 488-conjugated AffiniPure Goat Anti-Rabbit IgG(H+L).



Immunohistochemistry of paraffin-embedded human kidney tissue using PACO44021 at dilution of 1:100.