

RDM1 Antibody



PACO44023

Product Information

Size:

50ul

Reactivity:

Human

Source:

Rabbit

Isotype:

IgG

Applications:

ELISA, WB, IHC

Recommended dilutions:

ELISA:1:2000-1:10000, WB:1:200-1:1000,
IHC:1:20-1:200

Protein Background:

May confer resistance to the antitumor agent cisplatin. Binds to DNA and RNA.

Gene ID:

RDM1

Uniprot

Q8NG50

Synonyms:

RAD52 motif-containing protein 1 (RAD52 homolog B), RDM1, RAD52B

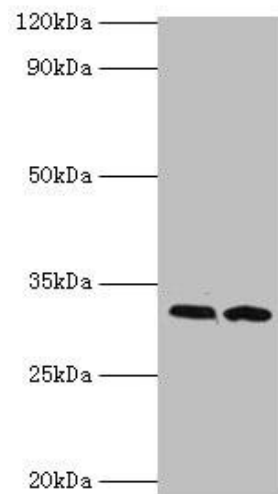
Immunogen:

Recombinant Human RAD52 motif-containing protein 1 protein (125-284AA).

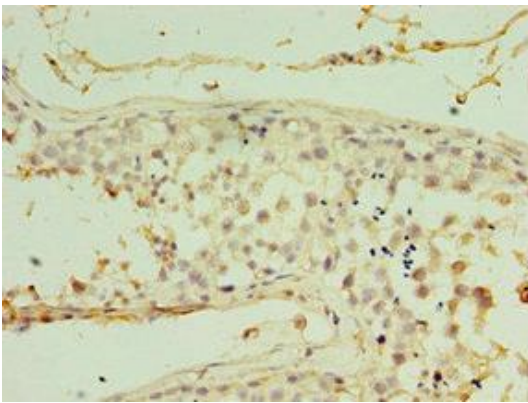
Storage:

PBS with 0.02% sodium azide, 50% glycerol, pH7.3.

Product Images



Western blot. All lanes: RDM1 antibody at 4 μ g/ml. Lane 1: PC-3 whole cell lysate. Lane 2: MCF-7 whole cell lysate. Secondary. Goat polyclonal to rabbit IgG at 1/10000 dilution. Predicted band size: 32, 30, 16, 14, 29, 26, 9, 13, 19, 27 kDa. Observed band size: 32 kDa.



Immunohistochemistry of paraffin-embedded human testis tissue using PACO44023 at dilution of 1:100.