

CARD11 Antibody



PACO44044

Product Information

Size:

50ul

Reactivity:

Human

Source:

Rabbit

Isotype:

IgG

Applications:

ELISA, WB

Recommended dilutions:

ELISA:1:2000-1:10000, WB:1:500-1:2000

Protein Background:

Involved in the costimulatory signal essential for T-cell receptor (TCR)-mediated T-cell activation. Its binding to DPP4 induces T-cell proliferation and NF-kappa-B activation in a T-cell receptor/CD3-dependent manner. Activates NF-kappa-B via BCL10 and IKK. Stimulates the phosphorylation of BCL10.

Gene ID:

CARD11

Uniprot

Q9BXL7

Synonyms:

Caspase recruitment domain-containing protein 11 (CARD-containing MAGUK protein 1) (Carma 1), CARD11, CARMA1

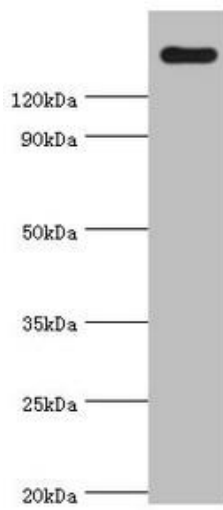
Immunogen:

Recombinant Human Caspase recruitment domain-containing protein 11 protein (985-1154AA).

Storage:

PBS with 0.02% sodium azide, 50% glycerol, pH7.3.

Product Images



Western blot. All lanes: CARD11 antibody at 4 μ g/ml + K562 whole cell lysate. Secondary. Goat polyclonal to rabbit IgG at 1/10000 dilution. Predicted band size: 133 kDa. Observed band size: 133 kDa.