

APOBEC3C Antibody



PACO44072

Product Information

Size:

50ul

Reactivity:

Human

Source:

Rabbit

Isotype:

IgG

Applications:

ELISA, WB, IHC

Recommended dilutions:

ELISA:1:2000-1:10000, WB:1:200-1:1000,
IHC:1:20-1:200

Protein Background:

Gene ID:

APOBEC3C

Uniprot

Q9NRW3

Synonyms:

DNA dC->dU-editing enzyme APOBEC-3C (A3C) (EC 3.5.4. -) (APOBEC1-like) (Phorbolins I), APOBEC3C, APOBEC1L PBI

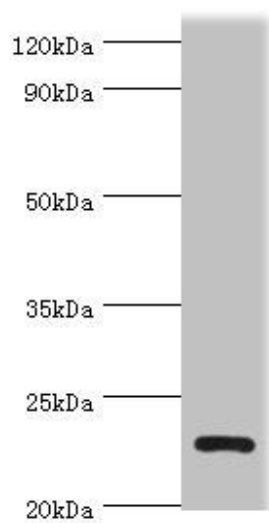
Immunogen:

Recombinant Human DNA dC->dU-editing enzyme APOBEC-3C protein (1-190AA).

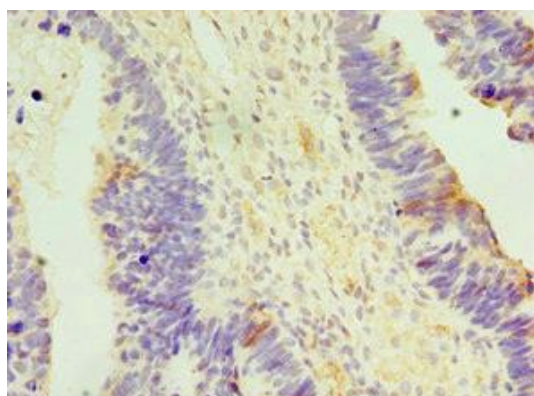
Storage:

PBS with 0.02% sodium azide, 50% glycerol, pH7.3.

Product Images



Western blot. All lanes: APOBEC3C antibody at 3 μ g/ml + K562 whole cell lysate. Secondary. Goat polyclonal to rabbit IgG at 1/10000 dilution. Predicted band size: 23 kDa. Observed band size: 23 kDa.



Immunohistochemistry of paraffin-embedded human ovarian cancer using PACO44072 at dilution of 1:100.