

PACO44077

---

## Product Information

**Size:**

50ul

**Reactivity:**

Human

**Source:**

Rabbit

**Isotype:**

IgG

**Applications:**

ELISA, IHC

**Recommended dilutions:**

ELISA:1:2000-1:10000, IHC:1:20-1:200

**Protein Background:**

Can phosphorylate the alpha subunit of EIF2 and may mediate translational control.

**Gene ID:**

EIF2AK4

**Uniprot**

Q9P2K8

**Synonyms:**

eIF-2-alpha kinase GCN2 (EC 2.7.11.1) (Eukaryotic translation initiation factor 2-alpha kinase 4) (GCN2-like protein), EIF2AK4, GCN2 KIAA1338

**Immunogen:**

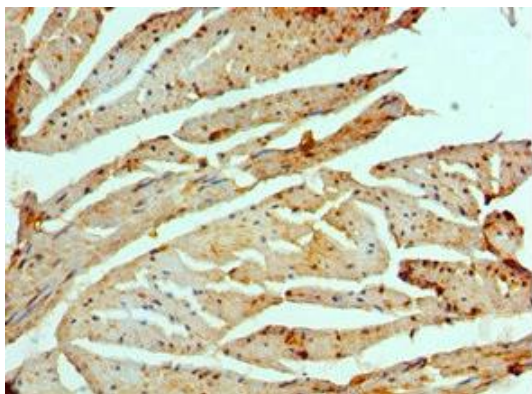
Recombinant Human eIF-2-&alpha; kinase GCN2 protein (1-300AA).

**Storage:**

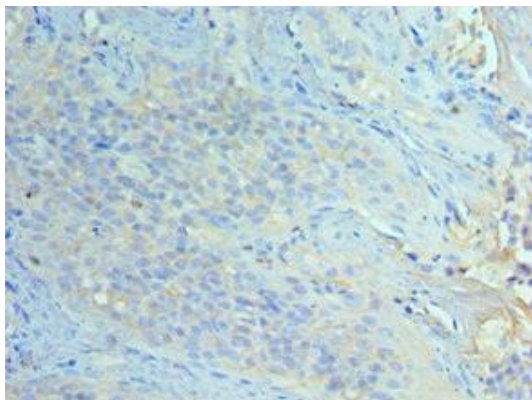
PBS with 0.02% sodium azide, 50% glycerol, pH7.3.

## Product Images

---



Immunohistochemistry of paraffin-embedded human prostate cancer using PACO44077 at dilution of 1:100.



Immunohistochemistry of paraffin-embedded human tonsil tissue using PACO44077 at dilution of 1:100.