

PACO44079

Product Information

Size:

50ul

Reactivity:

Human

Source:

Rabbit

Isotype:

IgG

Applications:

ELISA, WB, IHC

Recommended dilutions:

ELISA:1:2000-1:10000, WB:1:500-1:5000,
IHC:1:20-1:200

Protein Background:

Factor H functions as a cofactor in the inactivation of C3b by factor I and also increases the rate of dissociation of the C3bBb complex (C3 convertase) and the (C3b)NBB complex (C5 convertase) in the alternative complement pathway.

Gene ID:

CFH

Uniprot

P08603

Synonyms:

Complement factor H (H factor 1), CFH, HF HF1 HF2

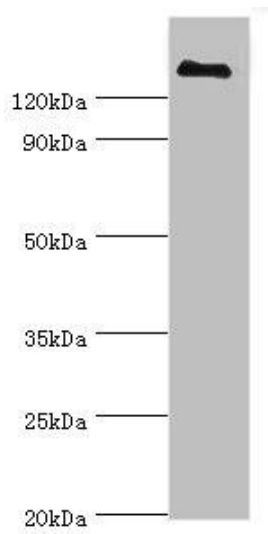
Immunogen:

Recombinant Human Complement factor H protein (20-270AA).

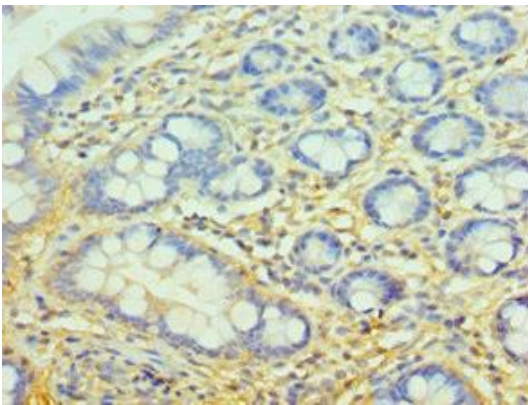
Storage:

PBS with 0.02% sodium azide, 50% glycerol, pH7.3.

Product Images



Western blot. All lanes: CFH antibody at 3 μ g/ml + human serum. Secondary. Goat polyclonal to rabbit IgG at 1/10000 dilution. Predicted band size: 140, 52 kDa. Observed band size: 140 kDa.



Immunohistochemistry of paraffin-embedded human small intestine tissue using PACO44079 at dilution of 1:100.