

# CRISP2 Antibody



PACO44081

---

## Product Information

**Size:**

50ul

**Reactivity:**

Human, Rat

**Source:**

Rabbit

**Isotype:**

IgG

**Applications:**

ELISA, WB, IHC

**Recommended dilutions:**

ELISA:1:2000-1:10000, WB:1:200-1:1000,  
IHC:1:20-1:200

**Protein Background:**

May regulate some ion channels' activity and thereby regulate calcium fluxes during sperm capacitation.

**Gene ID:**

CRISP2

**Uniprot**

P16562

**Synonyms:**

Cysteine-rich secretory protein 2 (CRISP-2) (Cancer/testis antigen 36) (CT36) (Testis-specific protein TPX-1), CRISP2, GAPDL5 TPX1

**Immunogen:**

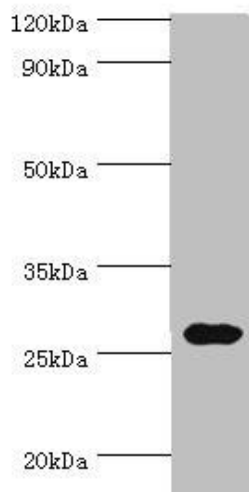
Recombinant Human Cysteine-rich secretory protein 2 protein (22-243AA).

**Storage:**

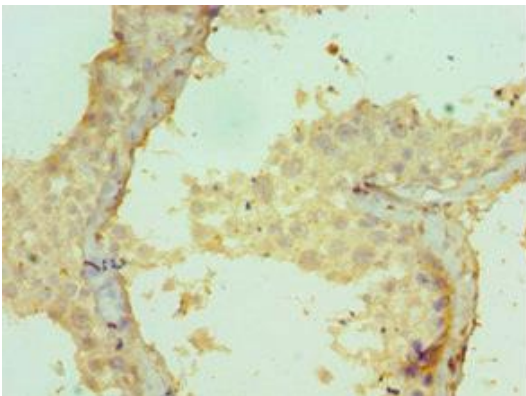
PBS with 0.02% sodium azide, 50% glycerol, pH7.3.

## Product Images

---



Western blot. All lanes: CRISP2 antibody at 12 $\mu$ g/ml + Rat gonad tissue. Secondary. Goat polyclonal to rabbit IgG at 1/10000 dilution. Predicted band size: 28, 32 kDa. Observed band size: 28 kDa.



Immunohistochemistry of paraffin-embedded human testis tissue using PACO44081 at dilution of 1:100.