

# IDH2 Antibody



PACO44084

---

## Product Information

**Size:**

50ul

**Reactivity:**

Human, Mouse

**Source:**

Rabbit

**Isotype:**

IgG

**Applications:**

ELISA, WB

**Recommended dilutions:**

ELISA:1:2000-1:10000, WB:1:500-1:2000

**Protein Background:**

Plays a role in intermediary metabolism and energy production. It may tightly associate or interact with the pyruvate dehydrogenase complex.

**Gene ID:**

IDH2

**Uniprot**

P48735

**Synonyms:**

Isocitrate dehydrogenase [NADP], mitochondrial (IDH) (EC 1.1.1.42) (ICD-M) (IDP) (NADP(+)-specific ICDH) (Oxalosuccinate decarboxylase), IDH2

**Immunogen:**

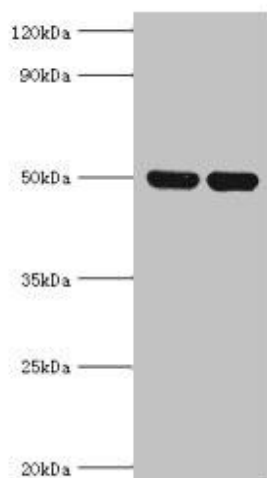
Recombinant Human Isocitrate dehydrogenase [NADP], mitochondrial protein (193-452AA).

**Storage:**

PBS with 0.02% sodium azide, 50% glycerol, pH7.3.

## Product Images

---



Western blot. All lanes: IDH2 antibody at 5 $\mu$ g/ml. Lane 1: HeLa whole cell lysate. Lane 2: Mouse heart tissue. Secondary: Goat polyclonal to rabbit IgG at 1/10000 dilution. Predicted band size: 51, 46 kDa. Observed band size: 51 kDa.