

CD1A Antibody



PACO44115

Product Information

Size:

50ul

Reactivity:

Human, Mouse

Source:

Rabbit

Isotype:

IgG

Applications:

ELISA, WB, IHC

Recommended dilutions:

ELISA:1:2000-1:10000, WB:1:500-1:2000,
IHC:1:20-1:200

Protein Background:

Antigen-presenting protein that binds self and non-self lipid and glycolipid antigens and presents them to T-cell receptors on natural killer T-cells.

Gene ID:

CD1A

Uniprot

P06126

Synonyms:

T-cell surface glycoprotein CD1a (T-cell surface antigen T6/Leu-6) (hTa1 thymocyte antigen) (CD antigen CD1a), CD1A

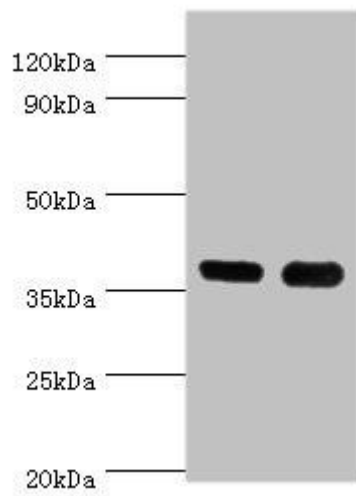
Immunogen:

Recombinant Human T-cell surface glycoprotein CD1a protein (21-181AA).

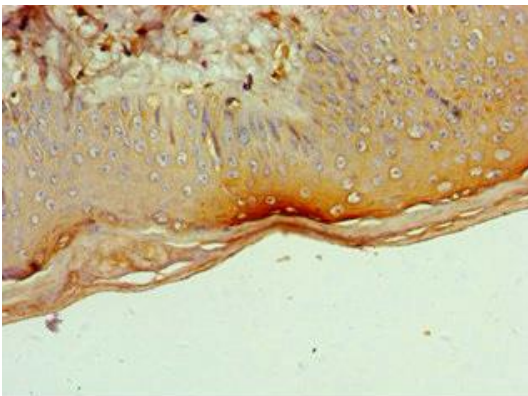
Storage:

PBS with 0.02% sodium azide, 50% glycerol, pH7.3.

Product Images



Western blot. All lanes: CD1A antibody at 6 μ g/ml. Lane 1: K562 whole cell lysate. Lane 2: Mouse thymus tissue. Secondary: Goat polyclonal to rabbit IgG at 1/10000 dilution. Predicted band size: 37 kDa. Observed band size: 37 kDa.



Immunohistochemistry of paraffin-embedded human skin tissue using PACO44115 at dilution of 1: 100.