

# MTMR4 Antibody



PACO44119

---

## Product Information

**Size:**

50ul

**Reactivity:**

Human

**Source:**

Rabbit

**Isotype:**

IgG

**Applications:**

ELISA, IHC

**Recommended dilutions:**

ELISA:1:2000-1:10000, IHC:1:20-1:200

**Protein Background:**

Dephosphorylates proteins phosphorylated on Ser, Thr, and Tyr residues and low molecular weight phosphatase substrate para-nitrophenylphosphate. Phosphorylates phosphatidylinositol 3,4,5-trisphosphate (PIP3).

**Gene ID:**

MTMR4

**Uniprot**

Q9NYA4

**Synonyms:**

Myotubularin-related protein 4 (EC 3.1.3.48) (FYVE domain-containing dual specificity protein phosphatase 2) (FYVE-DSP2) (Zinc finger FYVE domain-containing protein 11), MTMR4, KIAA0647 ZFYVE11

**Immunogen:**

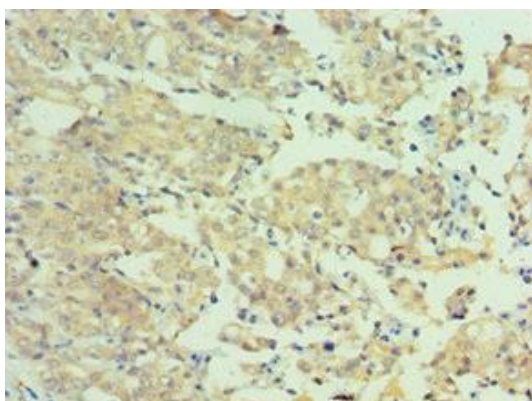
Recombinant Human Myotubularin-related protein 4 protein (570-820AA).

**Storage:**

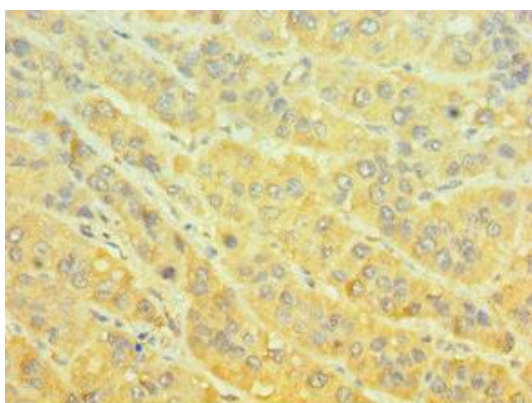
PBS with 0.02% sodium azide, 50% glycerol, pH7.3.

## Product Images

---



Immunohistochemistry of paraffin-embedded human colon cancer using PACO44119 at dilution of 1:100.



Immunohistochemistry of paraffin-embedded human liver cancer using PACO44119 at dilution of 1:100.