

PACO44120

Product Information

Size:

50ul

Reactivity:

Human

Source:

Rabbit

Isotype:

IgG

Applications:

ELISA, WB, IHC

Recommended dilutions:

ELISA:1:2000-1:10000, WB:1:200-1:1000,
IHC:1:20-1:200

Protein Background:

Nonselective, voltage-independent cation channel mediating sodium and calcium ion influx in response to oxidative stress. Extracellular calcium passes through the channel and acts from the intracellular side as a positive regulator in channel activation. Activated by ADP-ribose, nicotinamide adenine dinucleotide (NAD⁺), reactive nitrogen species and arachidonic acid, Inactivated by intracellular ATP. Confers susceptibility to cell death following oxidative stress. Isoform 2 does not seem to be regulated by ADPR. Has ADP-ribose pyrophosphatase activity.

Gene ID:

TRPM2

Uniprot

O94759

Synonyms:

Transient receptor potential cation channel subfamily M member 2 (Estrogen-responsive element-associated gene 1 protein) (Long transient receptor potential channel 2) (LTrpC-2) (LTrpC2) (Transient receptor potential channel 7) (TrpC7) (Transient receptor potential melastatin 2), TRPM2, EREG1 KNP3 LTRPC2 TRPC7

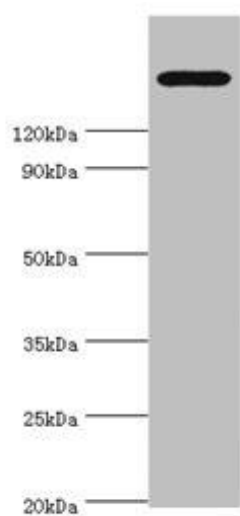
Immunogen:

Recombinant Human Transient receptor potential cation channel subfamily M member 2 protein (1204-1503AA).

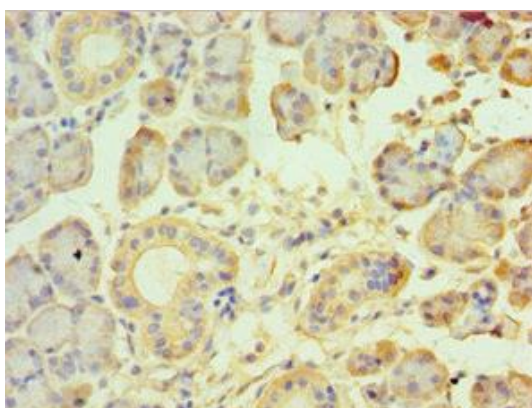
Storage:

PBS with 0.02% sodium azide, 50% glycerol, pH7.3.

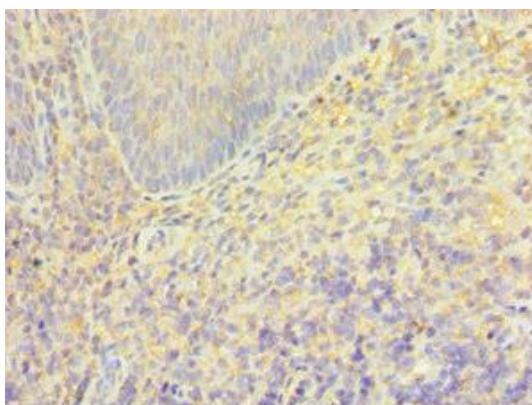
Product Images



Western blot. All lanes: TRPM2 antibody at 2 μ g/ml + K562 whole cell lysate. Secondary. Goat polyclonal to rabbit IgG at 1/10000 dilution. Predicted band size: 172, 166, 96 kDa. Observed band size: 172 kDa.



Immunohistochemistry of paraffin-embedded human pancreatic tissue using PACO44120 at dilution of 1:100.



Immunohistochemistry of paraffin-embedded human tonsil tissue using PACO44120 at dilution of 1:100.