

# MEF2C Antibody



PACO44149

---

## Product Information

**Size:**

50ul

**Reactivity:**

Human, Mouse

**Source:**

Rabbit

**Isotype:**

IgG

**Applications:**

ELISA, WB, IHC

**Recommended dilutions:**

ELISA:1:2000-1:10000, WB:1:200-1:1000,  
IHC:1:20-1:200

**Protein Background:****Gene ID:**

MEF2C

**Uniprot**

Q06413

**Synonyms:**

Myocyte-specific enhancer factor 2C (Myocyte enhancer factor 2C), MEF2C

**Immunogen:**

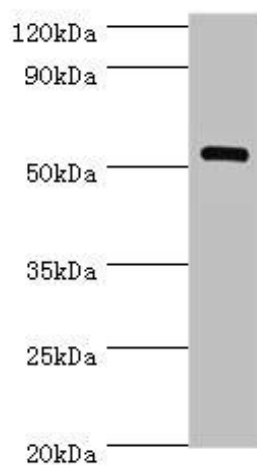
Recombinant Human Myocyte-specific enhancer factor 2C protein (170-380AA).

**Storage:**

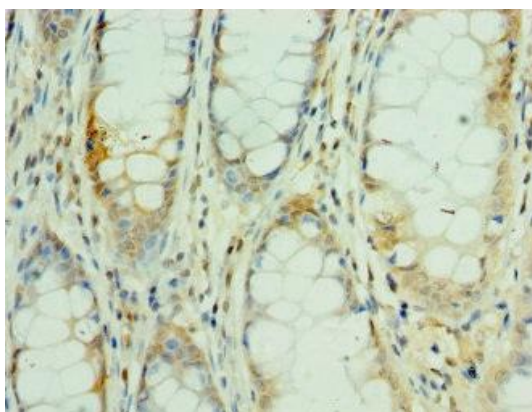
PBS with 0.02% sodium azide, 50% glycerol, pH7.3.

## Product Images

---



Western blot. All lanes: MEF2C antibody at 1 $\mu$ g/ml + Mouse skeletal muscle tissue. Secondary. Goat polyclonal to rabbit IgG at 1/10000 dilution. Predicted band size: 52, 51, 48, 45, 53 kDa. Observed band size: 52 kDa.



Immunohistochemistry of paraffin-embedded human colon cancer using PACO44149 at dilution of 1:100.