

MATN3 Antibody



PACO44150

Product Information

Size:

50ul

Reactivity:

Human, Mouse

Source:

Rabbit

Isotype:

IgG

Applications:

ELISA, WB, IHC

Recommended dilutions:

ELISA:1:2000-1:10000, WB:1:200-1:1000,
IHC:1:20-1:200

Protein Background:

Major component of the extracellular matrix of cartilage and may play a role in the formation of extracellular filamentous networks.

Gene ID:

MATN3

Uniprot

O15232

Synonyms:

Matrilin-3, MATN3

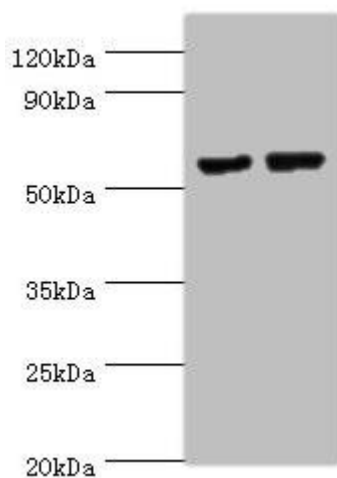
Immunogen:

Recombinant Human Matrilin-3 protein (277-486AA).

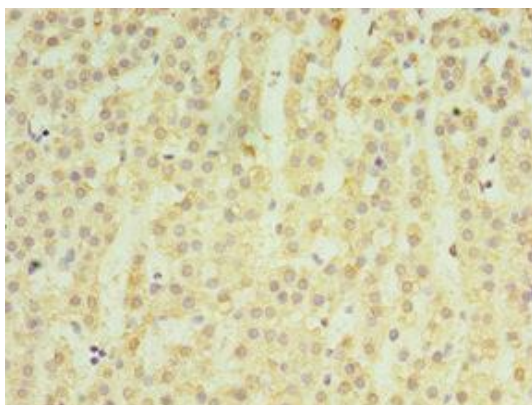
Storage:

PBS with 0.02% sodium azide, 50% glycerol, pH7.3.

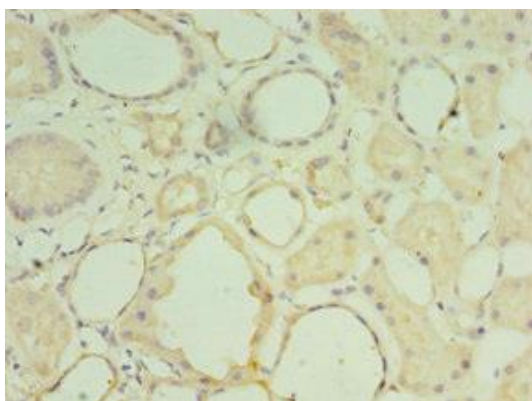
Product Images



Western blot. All lanes: MATN3 antibody at 14 μ g/ml. Lane 1: NIH/3T3 whole cell lysate. Lane 2: Mouse thymus tissue. Secondary. Goat polyclonal to rabbit IgG at 1/10000 dilution. Predicted band size: 53, 49 kDa. Observed band size: 53 kDa.



Immunohistochemistry of paraffin-embedded human adrenal gland tissue using PACO44150 at dilution of 1:100.



Immunohistochemistry of paraffin-embedded human kidney tissue using PACO44150 at dilution of 1:100.