

# SPAG16 Antibody



PACO44161

---

## Product Information

**Size:**

50ul

**Reactivity:**

Human, Mouse

**Source:**

Rabbit

**Isotype:**

IgG

**Applications:**

ELISA, WB, IHC

**Recommended dilutions:**

ELISA:1:2000-1:10000, WB:1:500-1:2000,  
IHC:1:20-1:200

**Protein Background:**

Necessary for sperm flagellar function. Plays a role in motile ciliogenesis. May help to recruit STK36 to the cilium or apical surface of the cell to initiate subsequent steps of construction of the central pair apparatus of motile cilia.

**Gene ID:**

SPAG16

**Uniprot**

Q8N0X2

**Synonyms:**

Sperm-associated antigen 16 protein (Pf20 protein homolog), SPAG16, PF20

**Immunogen:**

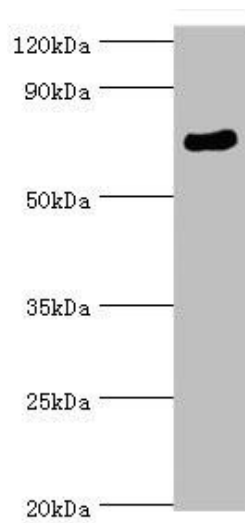
Recombinant Human Sperm-associated antigen 16 protein (1-183AA).

**Storage:**

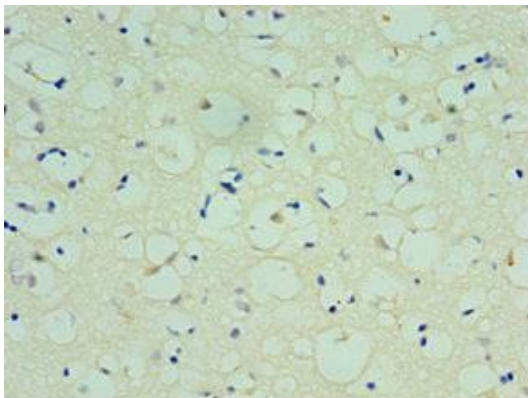
PBS with 0.02% sodium azide, 50% glycerol, pH7.3.

## Product Images

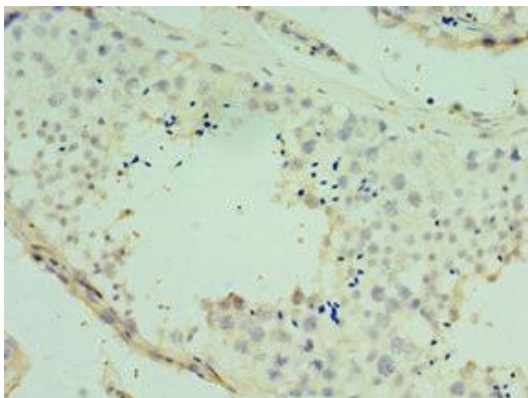
---



Western blot. All lanes: SPAG16 antibody at 6 $\mu$ g/ml + Mouse brain tissue. Secondary. Goat polyclonal to rabbit IgG at 1/10000 dilution. Predicted band size: 71, 51, 30, 21, 40 kDa. Observed band size: 71 kDa.



Immunohistochemistry of paraffin-embedded human brain tissue using PACO44161 at dilution of 1:100.



Immunohistochemistry of paraffin-embedded human testis tissue using PACO44161 at dilution of 1:100.