

PACO44164

---

## Product Information

**Size:**

50ul

**Reactivity:**

Human

**Source:**

Rabbit

**Isotype:**

IgG

**Applications:**

ELISA, WB

**Recommended dilutions:**

ELISA:1:2000-1:10000, WB:1:200-1:1000

**Protein Background:**

Sulfotransferase that utilizes 3'-phospho-5'-adenylyl sulfate (PAPS) as sulfonate donor to catalyze the sulfate conjugation of drugs, xenobiotic compounds, hormones, and neurotransmitters. May be involved in the activation of carcinogenic hydroxylamines. Shows activity towards p-nitrophenol and N-hydroxy-2-acetylamino-fluorene (N-OH-2AAF).

**Gene ID:**

SULT1C2

**Uniprot**

O00338

**Synonyms:**

Sulfotransferase 1C2 (ST1C2) (EC 2.8.2. -) (Sulfotransferase 1C1) (SULT1C#1) (humSULTC2), SULT1C2, SULT1C1

**Immunogen:**

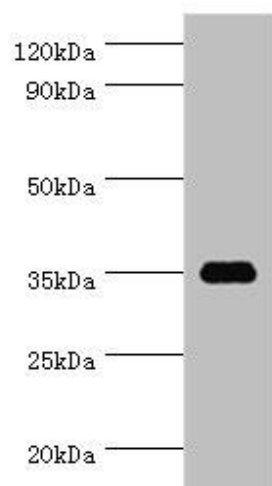
Recombinant Human Sulfotransferase 1C2 protein (1-120AA).

**Storage:**

PBS with 0.02% sodium azide, 50% glycerol, pH7.3.

## Product Images

---



Western blot. All lanes: SULT1C2 antibody at 5 $\mu$ g/ml + HeLa whole cell lysate. Secondary. Goat polyclonal to rabbit IgG at 1/10000 dilution. Predicted band size: 35, 36 kDa. Observed band size: 35 kDa.