

PACO44170

Product Information

Size:

50ul

Reactivity:

Human

Source:

Rabbit

Isotype:

IgG

Applications:

ELISA, WB, IHC

Recommended dilutions:

ELISA:1:2000-1:10000, WB:1:500-1:5000,
IHC:1:20-1:200

Protein Background:

Reversibly catalyzes the transfer of phosphate between ATP and various phosphagens (e. g. creatine phosphate). Creatine kinase isoenzymes play a central role in energy transduction in tissues with large, fluctuating energy demands, such as skeletal muscle, heart, brain and spermatozoa.

Gene ID:

CKMT2

Uniprot

P17540

Synonyms:

Creatine kinase S-type, mitochondrial (EC 2.7.3.2) (Basic-type mitochondrial creatine kinase) (Mib-CK) (Sarcomeric mitochondrial creatine kinase) (S-MtCK), CKMT2

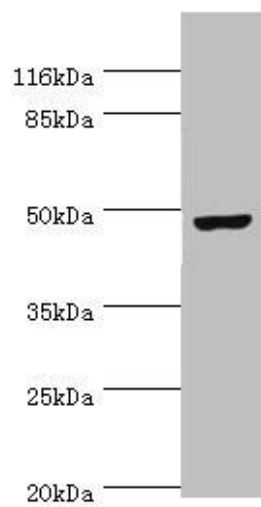
Immunogen:

Recombinant Human Creatine kinase S-type, mitochondrial protein (40-230AA).

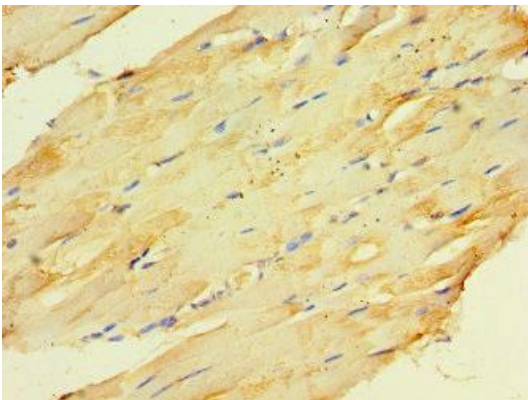
Storage:

PBS with 0.02% sodium azide, 50% glycerol, pH7.3.

Product Images



Western blot. All lanes: CKMT2 antibody at 6 μ g/ml + HeLa whole cell lysate. Secondary. Goat polyclonal to rabbit IgG at 1/10000 dilution. Predicted band size: 48 kDa. Observed band size: 48 kDa.



Immunohistochemistry of paraffin-embedded human skeletal muscle tissue using PACO44170 at dilution of 1:100.